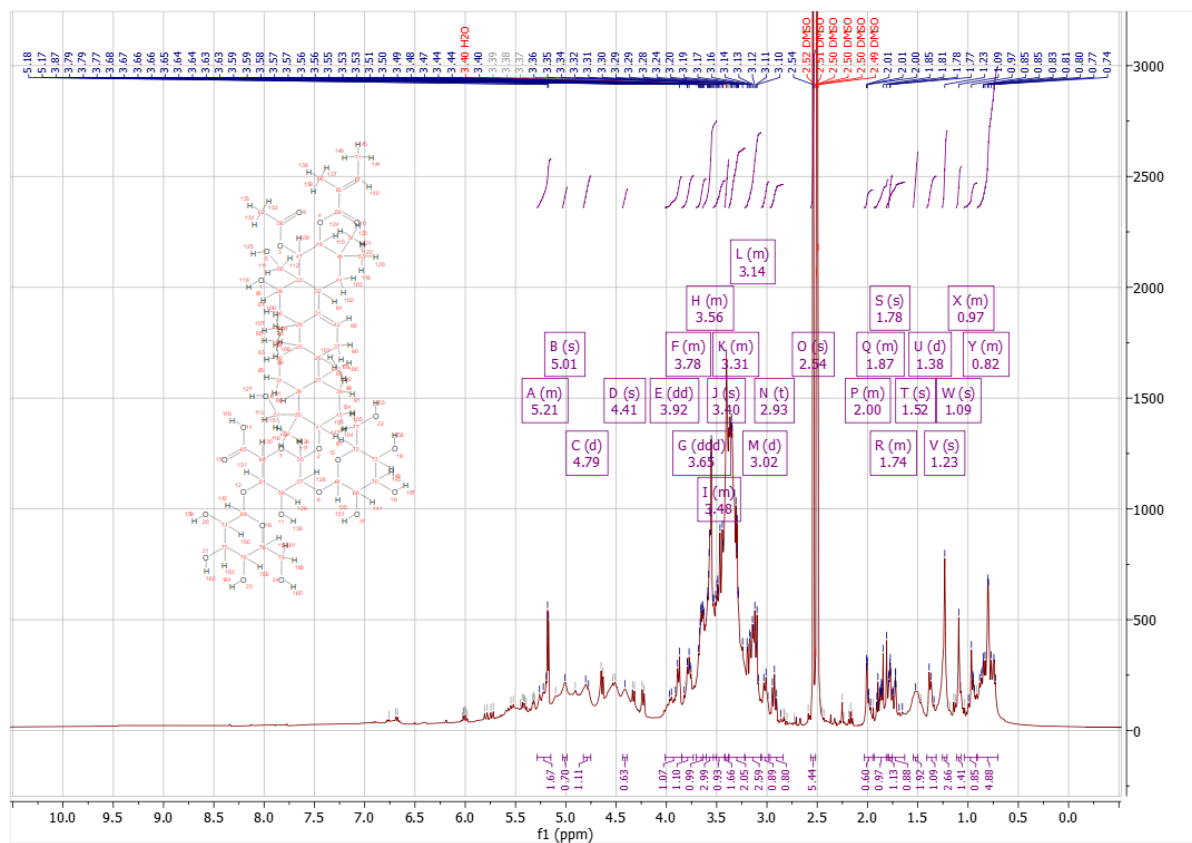


## Escin

$^1\text{H}$  NMR: Measured spectra matches complex mixture

qNMR: Dry powder contains  $9.1 \pm 0.6$  % of escin saponins

$^1\text{H}$  NMR,  $\text{d}_6$ -DMSO:



$^{13}\text{C}$  NMR,  $\text{d}_6\text{-DMSO}$ :



Prediction:

