

Palmytoylethanolamide

White powder in poly bag

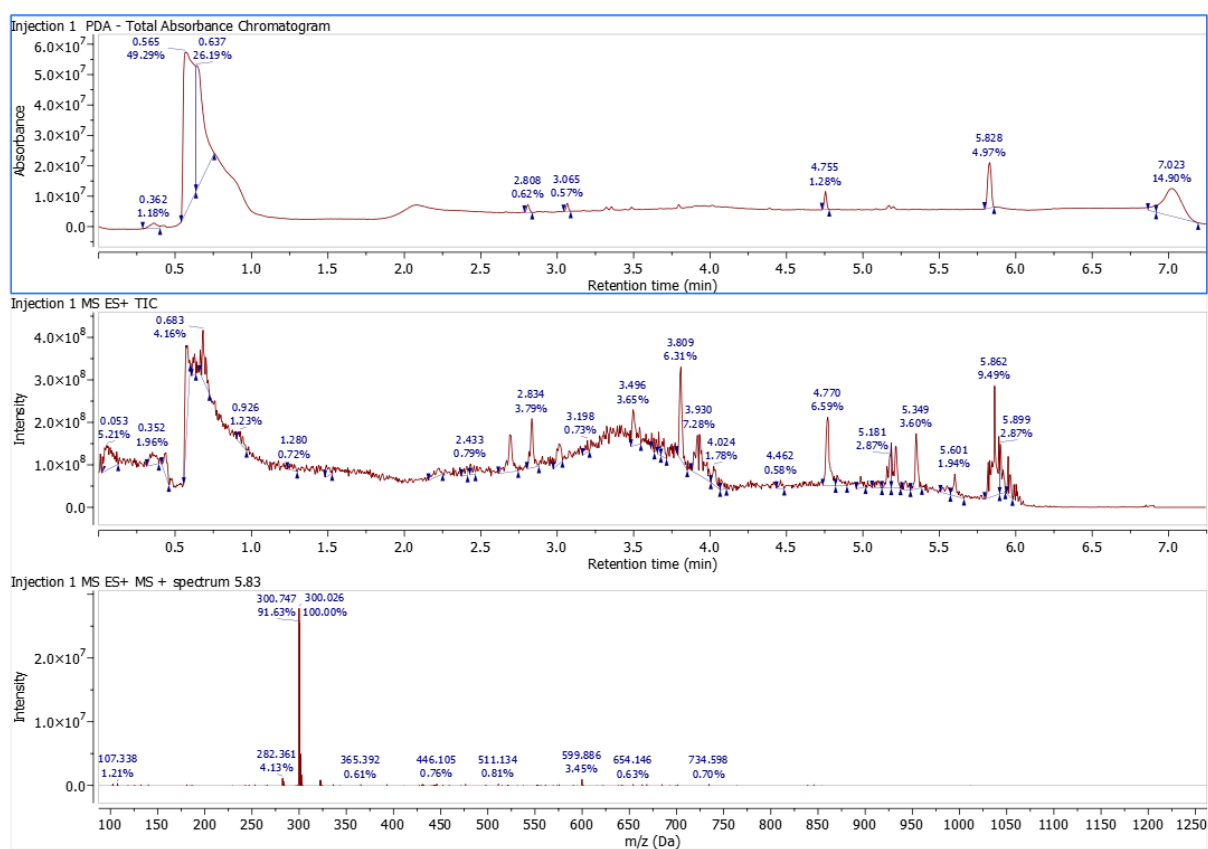
Expected MW: 300.290 M+H⁺

Found: 300.747 (M+H⁺) in a major late eluting peak

Observed mass matches target compound

¹H NMR: Measured spectra match target compound

qNMR: Dry sample contains 70.4 ± 2.8 % of target compound



^1H NMR, $\text{d}_6\text{-DMSO}$:

