

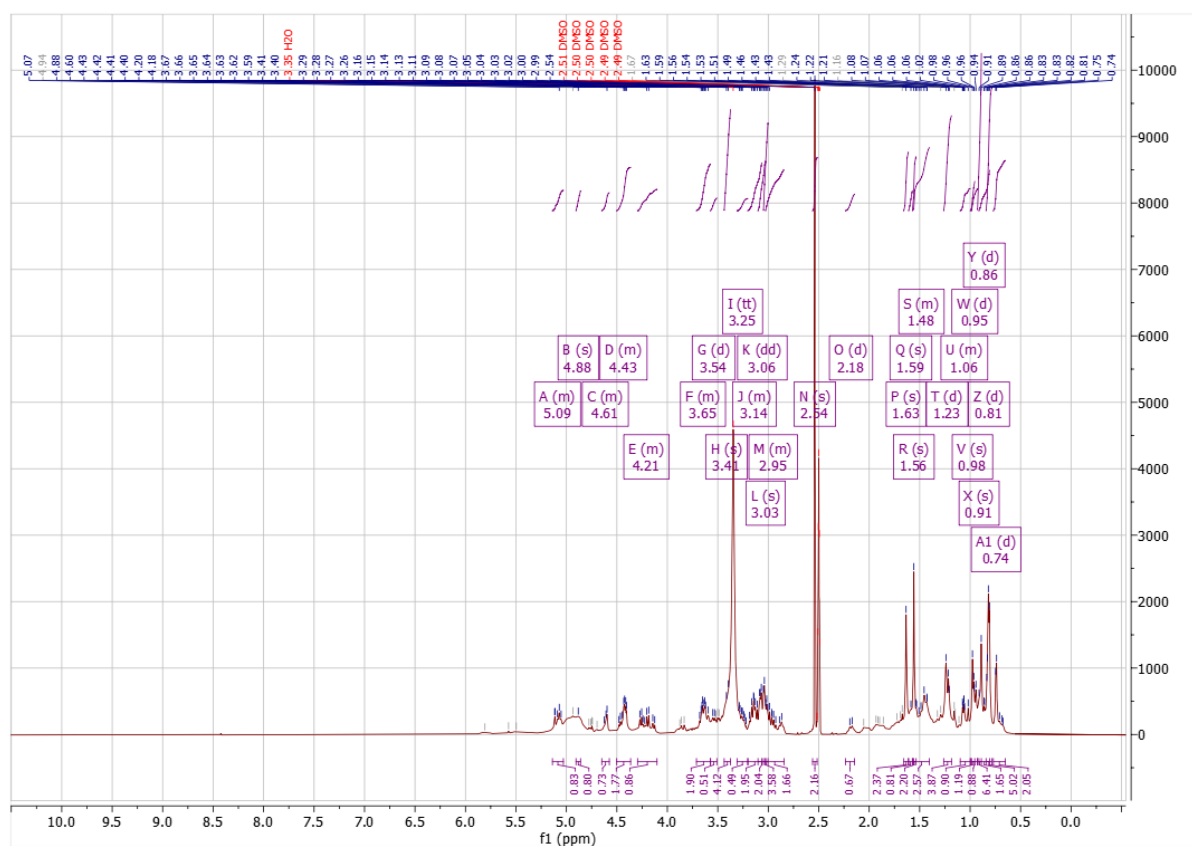
Panax ginseng

Beige powder in poly bag

$^1\text{H}+^{13}\text{C}$ NMR: Measured spectra match complex mixture containing ginsenosides

qNMR: Dry sample contains $32.1 \pm 3.7 \%$ (w/w) of total ginsenosides

^1H NMR, $\text{d}_6\text{-DMSO}$:



^{13}C NMR, $\text{d}_6\text{-DMSO}$ (APT):

