

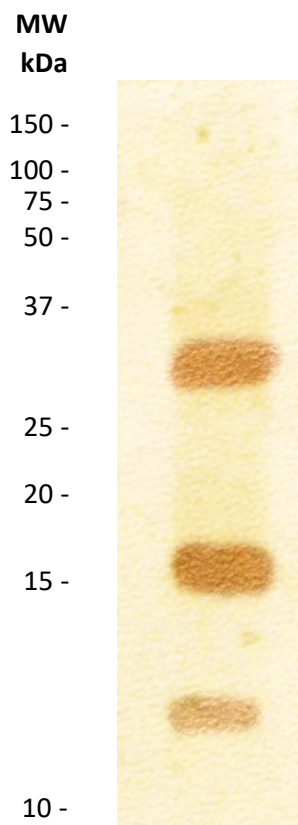
HMG

White powder in glass vial

Expected MW: 35.5 kDa (FSH), 28 kDa (LH)

AAA: Sample contains 103.5 ± 1.1 μg of FSH and LH combined

SDS PAGE: Observed bands correspond to FSH (35.5 kDa) and subunits of LH (alpha 13 kDa + beta 15 kDa). FSH/LH ratio 1:1.



SDS PAGE (Tris/glycine/SDS, 16%), silver stain (Merril-Blum)