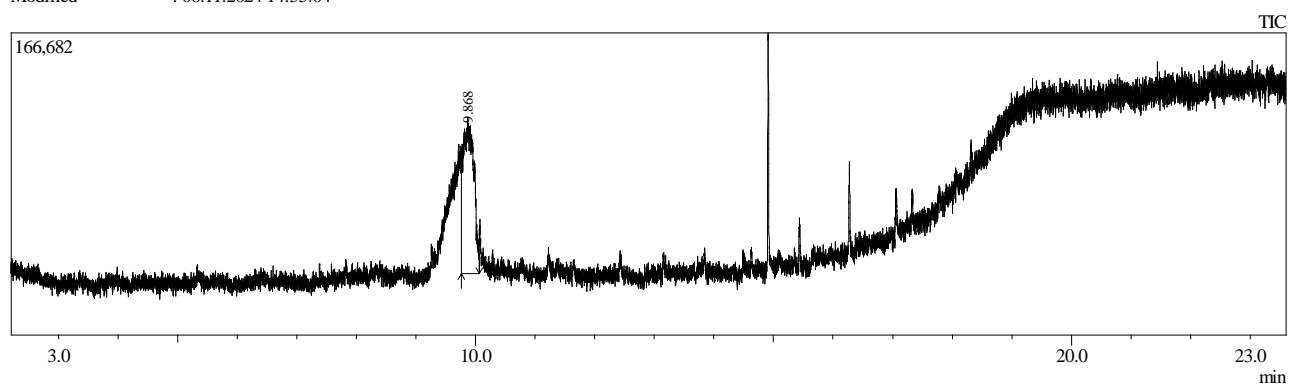


Sample Information

Analyzed by : Admin
 Analyzed : 06.11.2024 14:31:27
 Sample Type : Unknown
 Level # : 1
 Sample Name : 3569-4 GCMS Screening
 Sample ID :
 IS Amount : [1]=1
 Sample Amount : 1
 Dilution Factor : 1
 Vial # : 55
 Injection Volume : 0.10
 Data File : C:\GCMSsolution\Data\Project1\3569-4 GCMS Screening_54.qgd
 Org Data File : C:\GCMSsolution\Data\Project1\3569-4 GCMS Screening_54.qgd
 Method File : C:\GCMSsolution\Data\Project1\the real screening gradient.qgm
 Org Method File : C:\GCMSsolution\Data\Project1\the real screening gradient.qgm
 Report File : C:\GCMSsolution\Data\Project1\Simple Qualitative.qgr
 Tuning File : C:\GCMSsolution\System\Tune1\HIGH CONCENTRATION TUNE.qgt
 Modified by : Admin
 Modified : 06.11.2024 14:55:04



Peak Report TIC

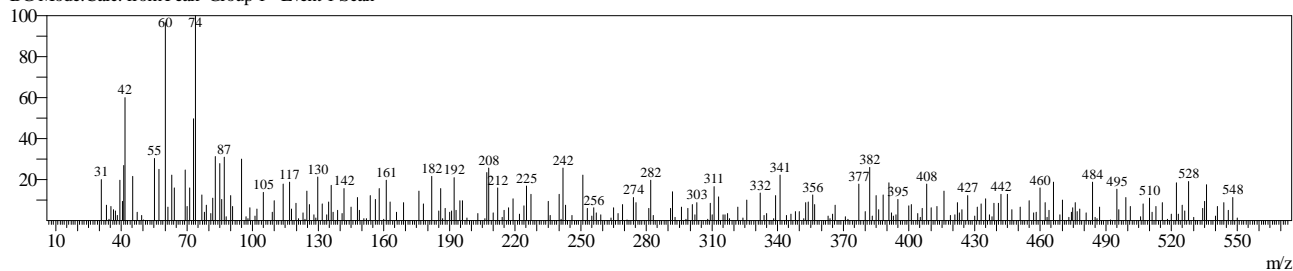
Peak#	R. Time	Area	Area%	Name
1	9.868	1068528	100.00	Sorbitol
		1068528	100.00	

Line#:1 R.Time:5.332(Scan#:3760)

MassPeaks:266

RawMode:Averaged 5.332-5.333(3759-3761) BasePeak:74(730)

BG Mode:Calc. from Peak Group 1 - Event 1 Scan

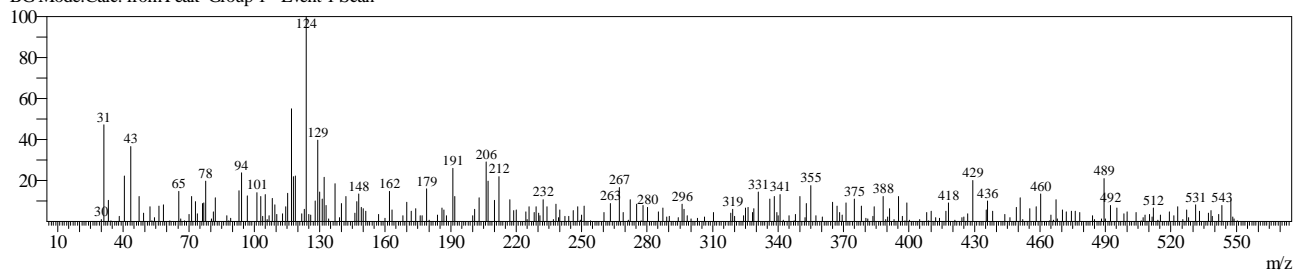


Line#:2 R.Time:7.824(Scan#:6750)

MassPeaks:259

RawMode:Averaged 7.823-7.825(6749-6751) BasePeak:124(1087)

BG Mode:Calc. from Peak Group 1 - Event 1 Scan

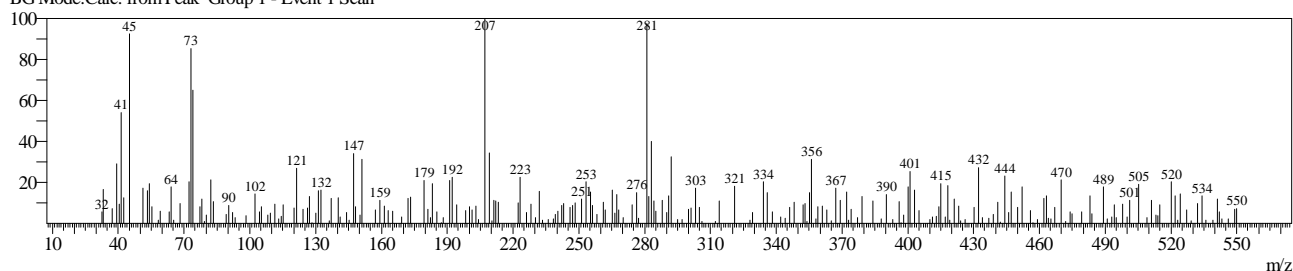


Line#:3 R.Time:9.249(Scan#:8460)

MassPeaks:245

RawMode:Averaged 9.248-9.250(8459-8461) BasePeak:207(707)

BG Mode:Calc. from Peak Group 1 - Event 1 Scan

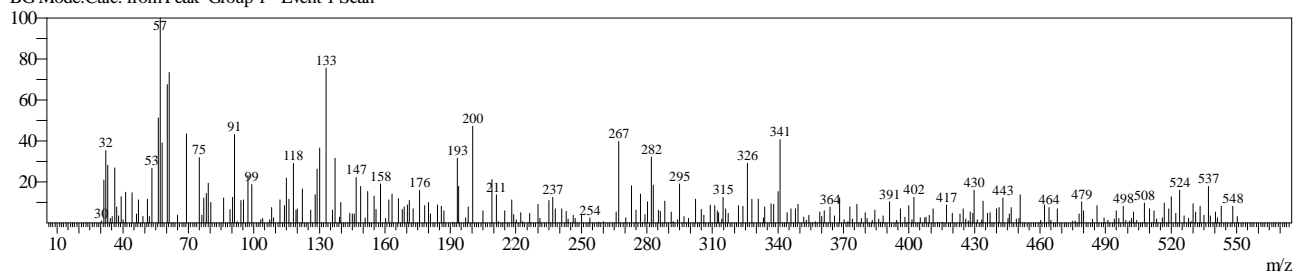


Line#:4 R.Time:9.624(Scan#:8910)

MassPeaks:277

RawMode:Averaged 9.623-9.625(8909-8911) BasePeak:57(829)

BG Mode:Calc. from Peak Group 1 - Event 1 Scan

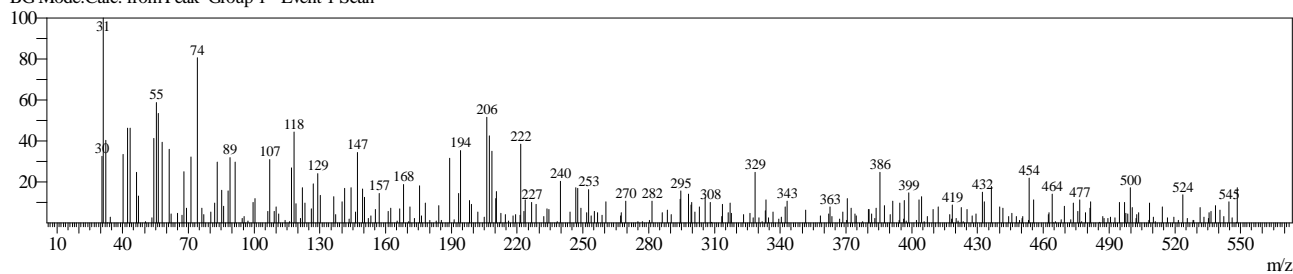


Line#:5 R.Time:9.716(Scan#:9020)

MassPeaks:278

RawMode:Averaged 9.715-9.717(9019-9021) BasePeak:31(818)

BG Mode:Calc. from Peak Group 1 - Event 1 Scan

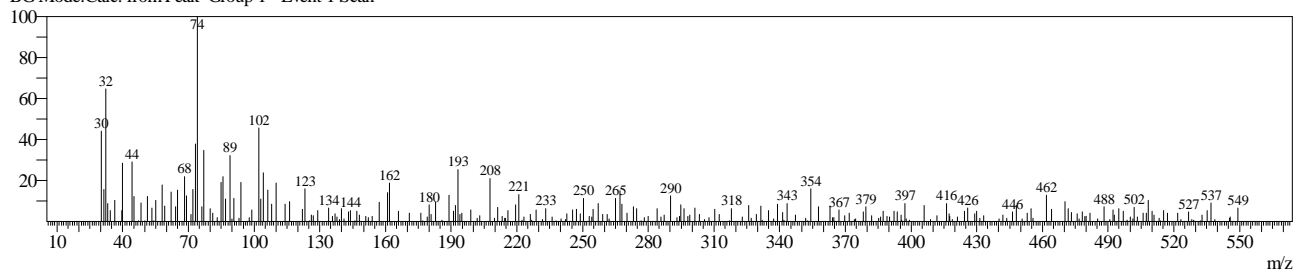


Line#:6 R.Time:9.741(Scan#:9050)

MassPeaks:266

RawMode:Averaged 9.740-9.742(9049-9051) BasePeak:74(1228)

BG Mode:Calc. from Peak Group 1 - Event 1 Scan

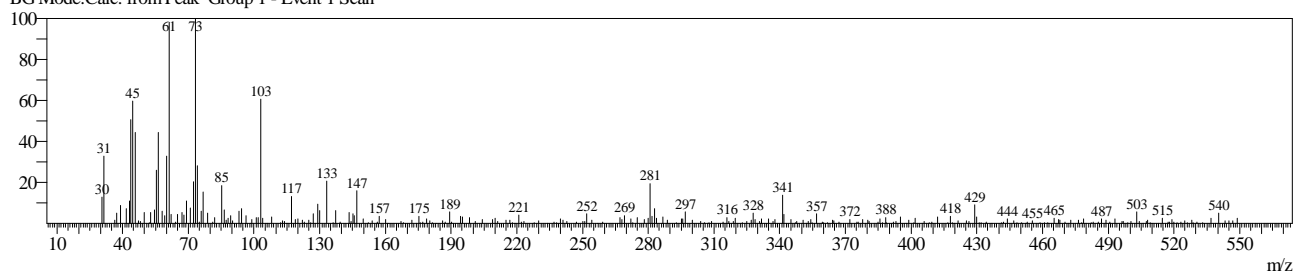


Line#:7 R.Time:9.868(Scan#:9203)

MassPeaks:287

RawMode:Averaged 9.867-9.869(9202-9204) BasePeak:73(4049)

BG Mode:Calc. from Peak Group 1 - Event 1 Scan

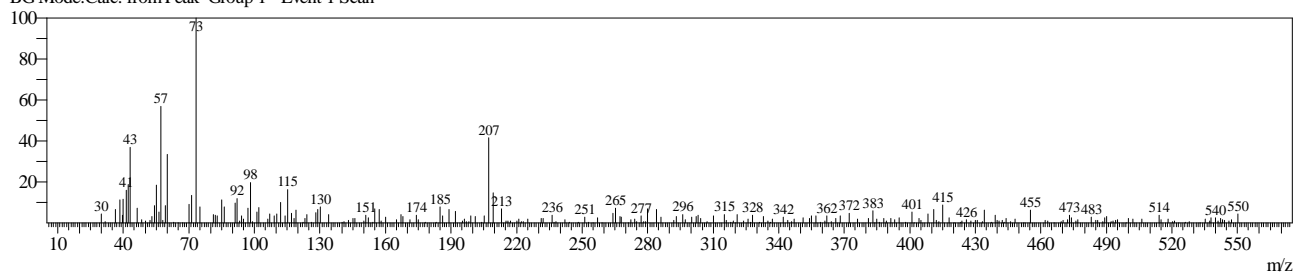


Line#:8 R.Time:10.074(Scan#:9450)

MassPeaks:258

RawMode:Averaged 10.073-10.075(9449-9451) BasePeak:73(2770)

BG Mode:Calc. from Peak Group 1 - Event 1 Scan

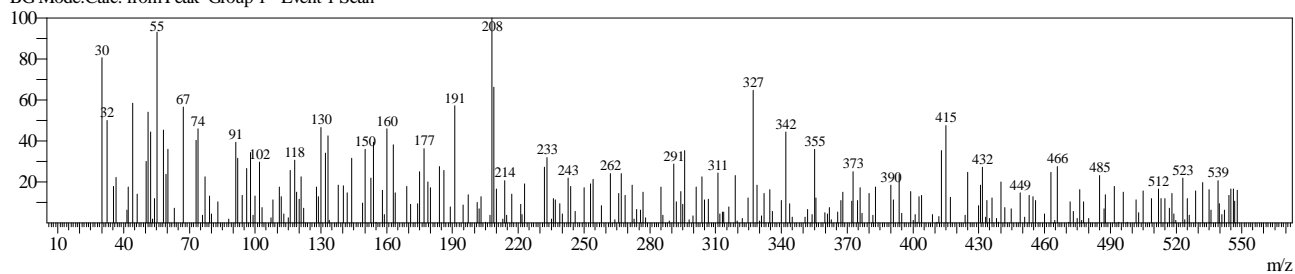


Line#:9 R.Time:10.166(Scan#:9560)

MassPeaks:257

RawMode:Averaged 10.165-10.167(9559-9561) BasePeak:208(443)

BG Mode:Calc. from Peak Group 1 - Event 1 Scan

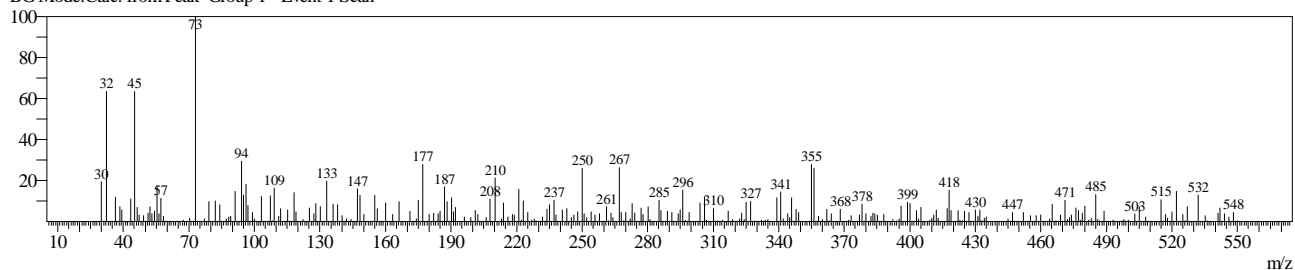


Line#:10 R.Time:10.286(Scan#:9704)

MassPeaks:258

RawMode:Averaged 10.285-10.287(9703-9705) BasePeak:73(1214)

BG Mode:Calc. from Peak Group 1 - Event 1 Scan

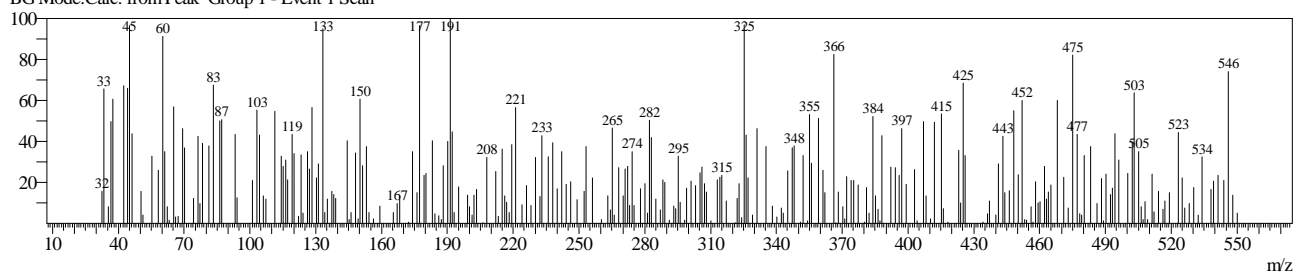


Line#:11 R.Time:10.974(Scan#:10530)

MassPeaks:285

RawMode:Averaged 10.973-10.975(10529-10531) BasePeak:191(262)

BG Mode:Calc. from Peak Group 1 - Event 1 Scan

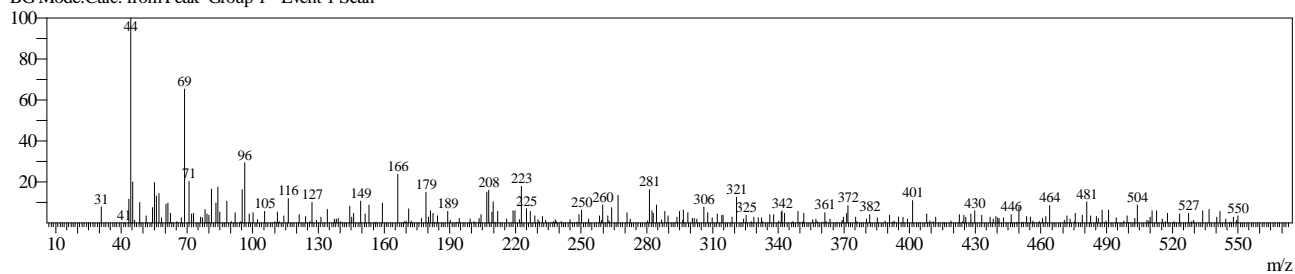


Line#:12 R.Time:11.223(Scan#:10829)

MassPeaks:266

RawMode:Averaged 11.223-11.224(10828-10830) BasePeak:44(1652)

BG Mode:Calc. from Peak Group 1 - Event 1 Scan

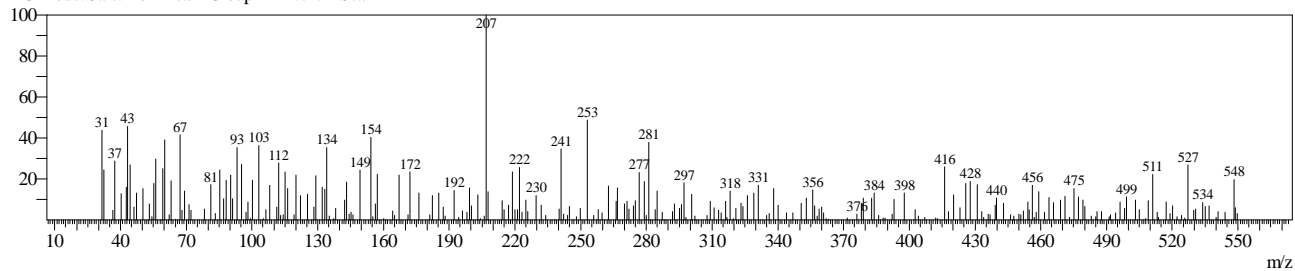


Line#:13 R.Time:11.366(Scan#:11000)

MassPeaks:262

RawMode:Averaged 11.365-11.367(10999-11001) BasePeak:207(681)

BG Mode:Calc. from Peak Group 1 - Event 1 Scan

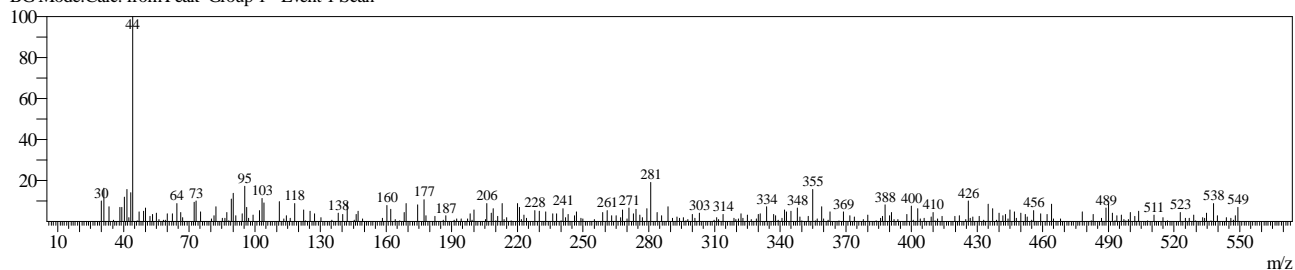


Line#:14 R.Time:11.533(Scan#:11200)

MassPeaks:274

RawMode:Averaged 11.532-11.533(11199-11201) BasePeak:44(1921)

BG Mode:Calc. from Peak Group 1 - Event 1 Scan

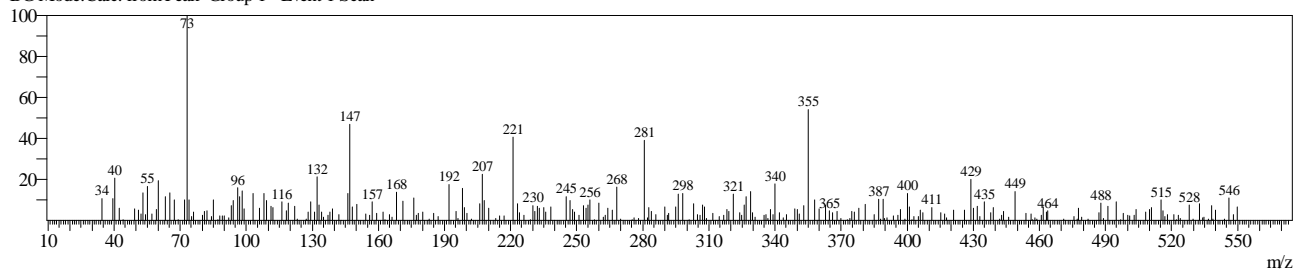


Line#:15 R.Time:11.648(Scan#:11339)

MassPeaks:279

RawMode:Averaged 11.648-11.649(11338-11340) BasePeak:73(1192)

BG Mode:Calc. from Peak Group 1 - Event 1 Scan

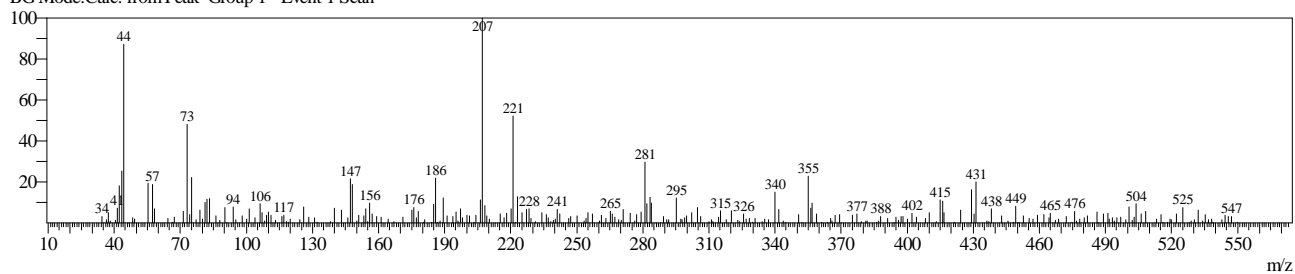


Line#:16 R.Time:12.424(Scan#:12270)

MassPeaks:284

RawMode:Averaged 12.423-12.425(12269-12271) BasePeak:207(1680)

BG Mode:Calc. from Peak Group 1 - Event 1 Scan

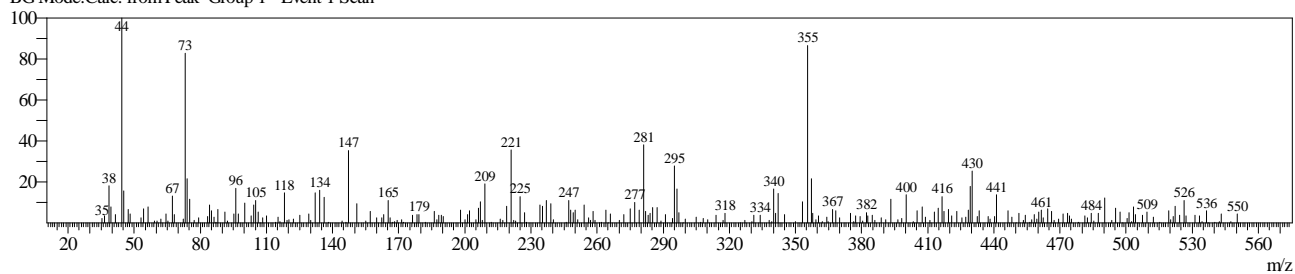


Line#:17 R.Time:13.847(Scan#:13977)

MassPeaks:270

RawMode:Averaged 13.846-13.848(13976-13978) BasePeak:44(1462)

BG Mode:Calc. from Peak Group 1 - Event 1 Scan

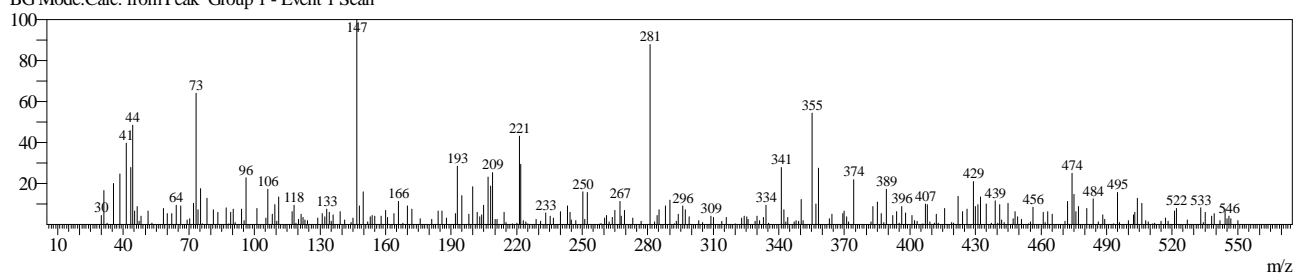


Line#:18 R.Time:14.498(Scan#:14758)

MassPeaks:271

RawMode:Averaged 14.497-14.498(14757-14759) BasePeak:147(1045)

BG Mode:Calc. from Peak Group 1 - Event 1 Scan

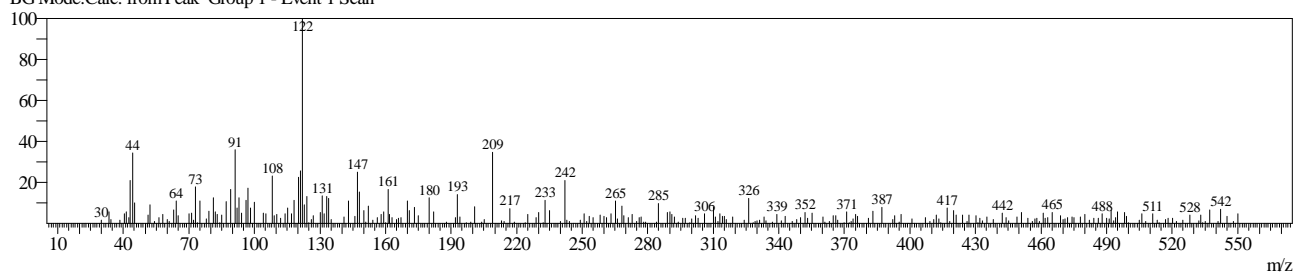


Line#:19 R.Time:14.633(Scan#:14920)

MassPeaks:281

RawMode:Averaged 14.632-14.633(14919-14921) BasePeak:122(1834)

BG Mode:Calc. from Peak Group 1 - Event 1 Scan

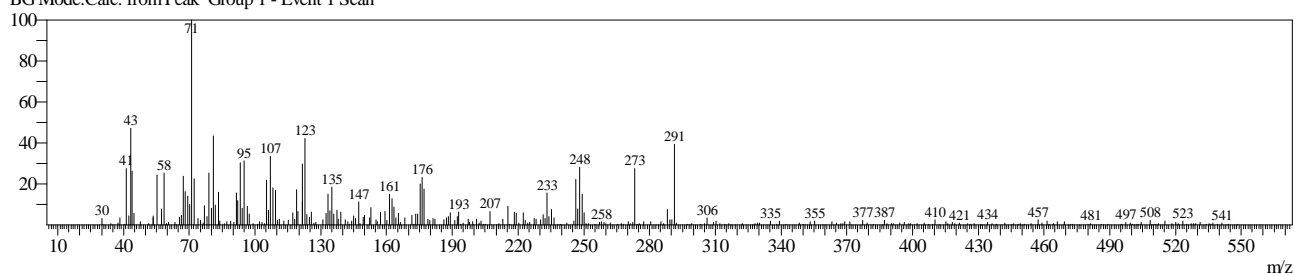


Line#:20 R.Time:14.914(Scan#:15258)

MassPeaks:324

RawMode:Averaged 14.913-14.915(15257-15259) BasePeak:71(7419)

BG Mode:Calc. from Peak Group 1 - Event 1 Scan

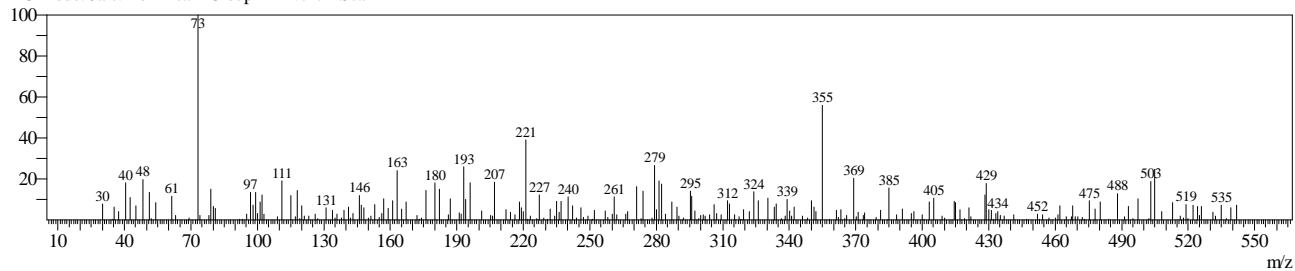


Line#:21 R.Time:15.093(Scan#:15473)

MassPeaks:246

RawMode:Averaged 15.092-15.094(15472-15474) BasePeak:73(1221)

BG Mode:Calc. from Peak Group 1 - Event 1 Scan

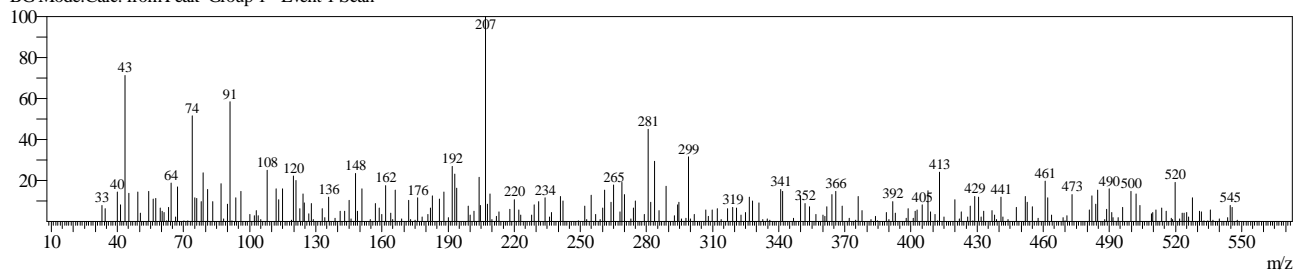


Line#:22 R.Time:15.358(Scan#:15791)

MassPeaks:265

RawMode:Averaged 15.358-15.359(15790-15792) BasePeak:207(867)

BG Mode:Calc. from Peak Group 1 - Event 1 Scan

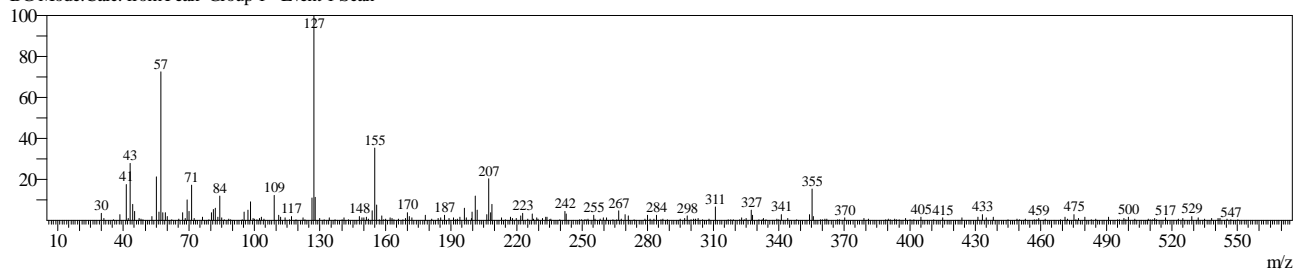


Line#:23 R.Time:16.276(Scan#:16892)

MassPeaks:279

RawMode:Averaged 16.275-16.277(16891-16893) BasePeak:127(7946)

BG Mode:Calc. from Peak Group 1 - Event 1 Scan

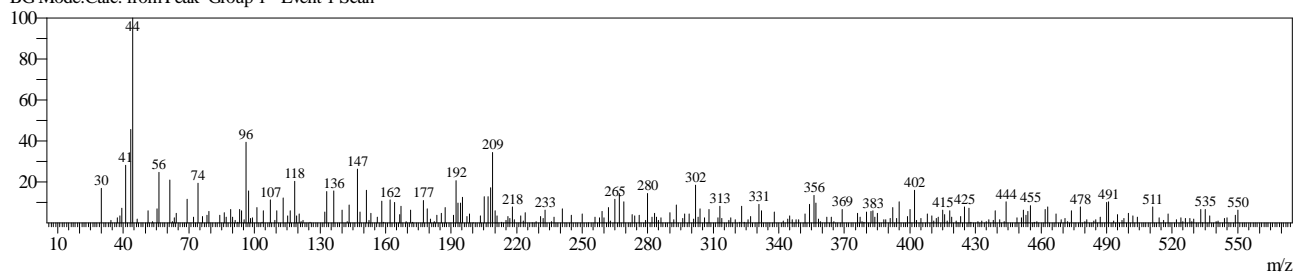


Line#:24 R.Time:16.874(Scan#:17610)

MassPeaks:273

RawMode:Averaged 16.873-16.875(17609-17611) BasePeak:44(1551)

BG Mode:Calc. from Peak Group 1 - Event 1 Scan

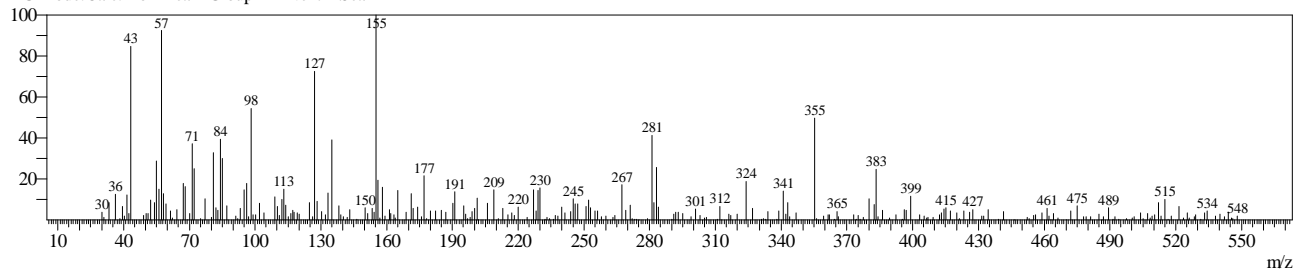


Line#:25 R.Time:17.060(Scan#:17833)

MassPeaks:283

RawMode:Averaged 17.059-17.061(17832-17834) BasePeak:155(1981)

BG Mode:Calc. from Peak Group 1 - Event 1 Scan

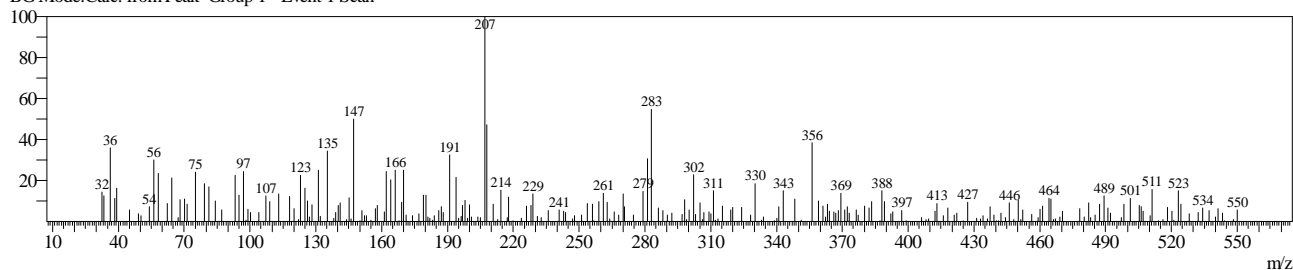


Line#:26 R.Time:17.249(Scan#:18060)

MassPeaks:255

RawMode:Averaged 17.248-17.250(18059-18061) BasePeak:207(987)

BG Mode:Calc. from Peak Group 1 - Event 1 Scan

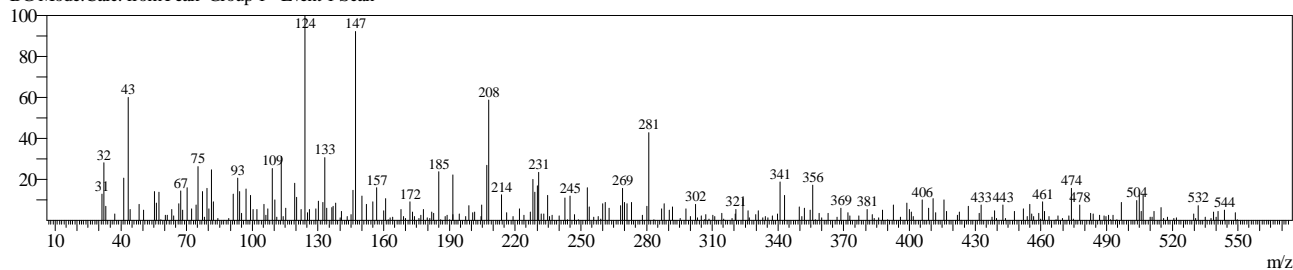


Line#:27 R.Time:17.333(Scan#:18160)

MassPeaks:274

RawMode:Averaged 17.332-17.333(18159-18161) BasePeak:124(1661)

BG Mode:Calc. from Peak Group 1 - Event 1 Scan

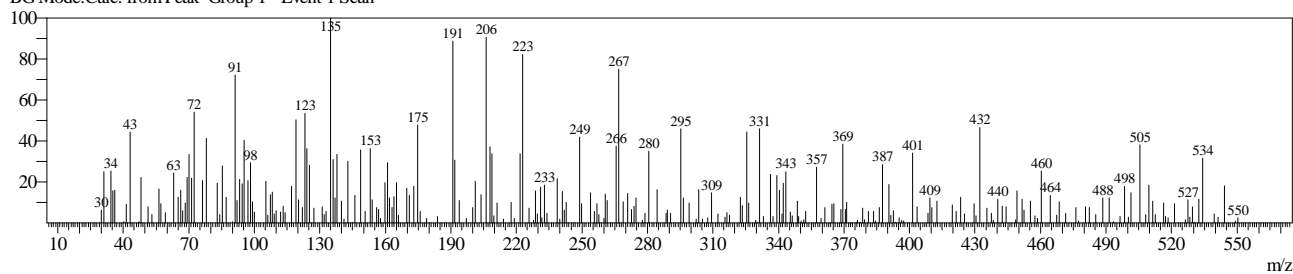


Line#:28 R.Time:17.766(Scan#:18680)

MassPeaks:270

RawMode:Averaged 17.765-17.767(18679-18681) BasePeak:135(736)

BG Mode:Calc. from Peak Group 1 - Event 1 Scan

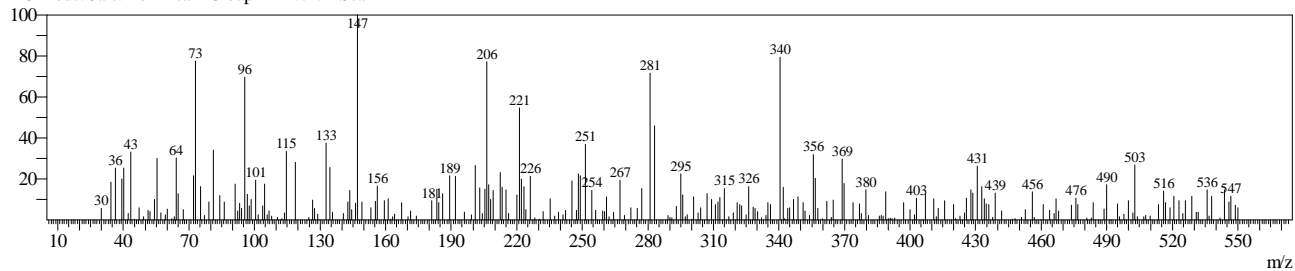


Line#:29 R.Time:17.963(Scan#:18917)

MassPeaks:270

RawMode:Averaged 17.962-17.964(18916-18918) BasePeak:147(904)

BG Mode:Calc. from Peak Group 1 - Event 1 Scan

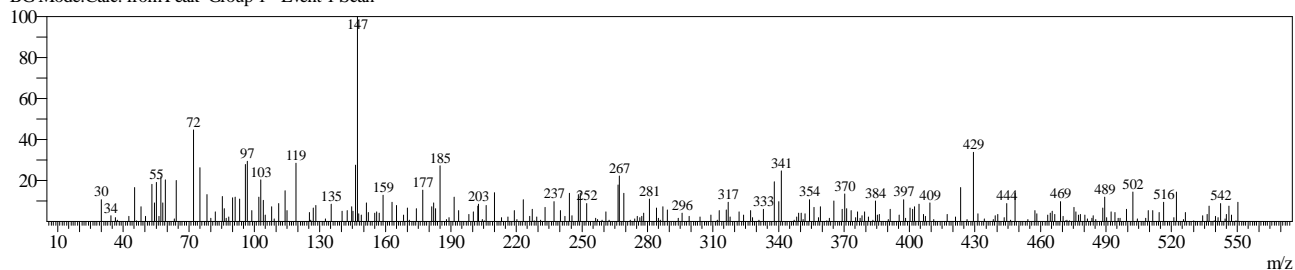


Line#:30 R.Time:18.073(Scan#:19049)

MassPeaks:257

RawMode:Averaged 18.073-18.074(19048-19050) BasePeak:147(1470)

BG Mode:Calc. from Peak Group 1 - Event 1 Scan

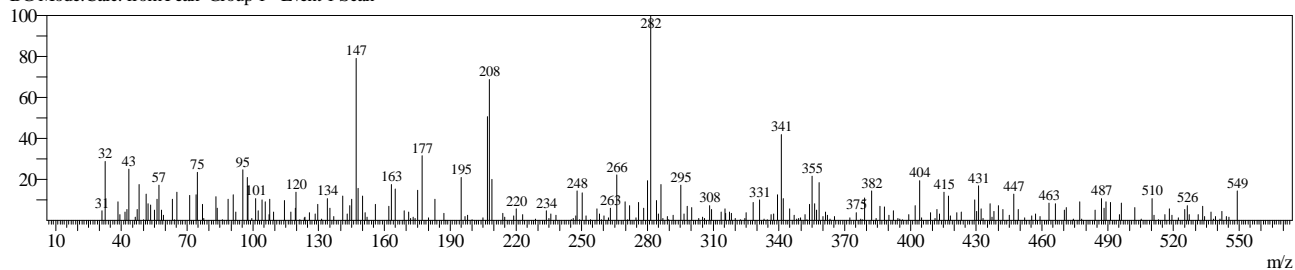


Line#:31 R.Time:18.233(Scan#:19240)

MassPeaks:256

RawMode:Averaged 18.232-18.233(19239-19241) BasePeak:282(1503)

BG Mode:Calc. from Peak Group 1 - Event 1 Scan

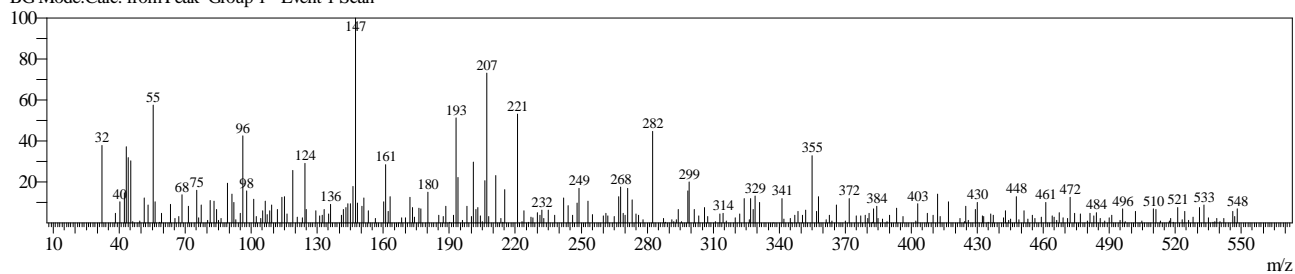


Line#:32 R.Time:18.319(Scan#:19344)

MassPeaks:270

RawMode:Averaged 18.318-18.320(19343-19345) BasePeak:147(1414)

BG Mode:Calc. from Peak Group 1 - Event 1 Scan

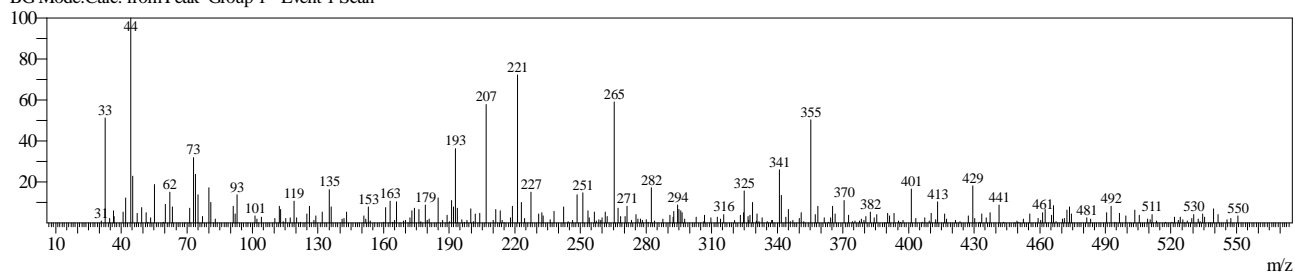


Line#:33 R.Time:18.383(Scan#:19420)

MassPeaks:273

RawMode:Averaged 18.382-18.383(19419-19421) BasePeak:44(1710)

BG Mode:Calc. from Peak Group 1 - Event 1 Scan

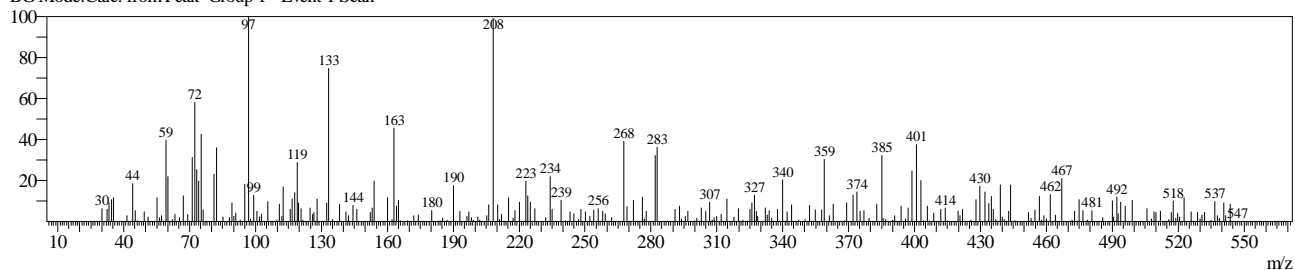


Line#:34 R.Time:18.624(Scan#:19710)

MassPeaks:261

RawMode:Averaged 18.623-18.625(19709-19711) BasePeak:97(1166)

BG Mode:Calc. from Peak Group 1 - Event 1 Scan

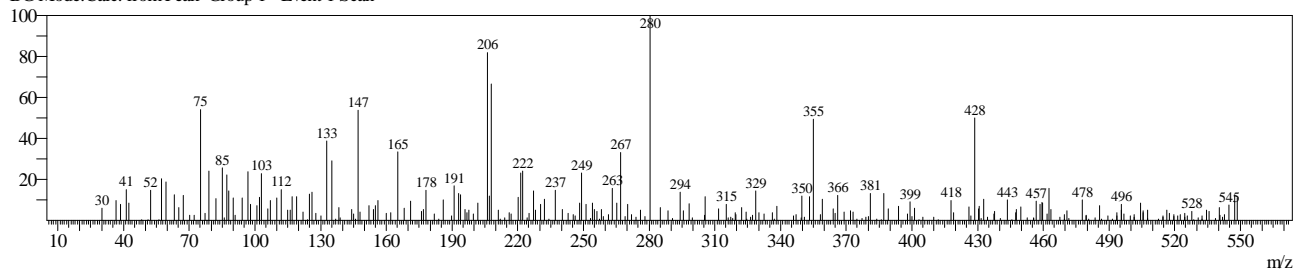


Line#:35 R.Time:18.758(Scan#:19870)

MassPeaks:272

RawMode:Averaged 18.757-18.758(19869-19871) BasePeak:280(1316)

BG Mode:Calc. from Peak Group 1 - Event 1 Scan

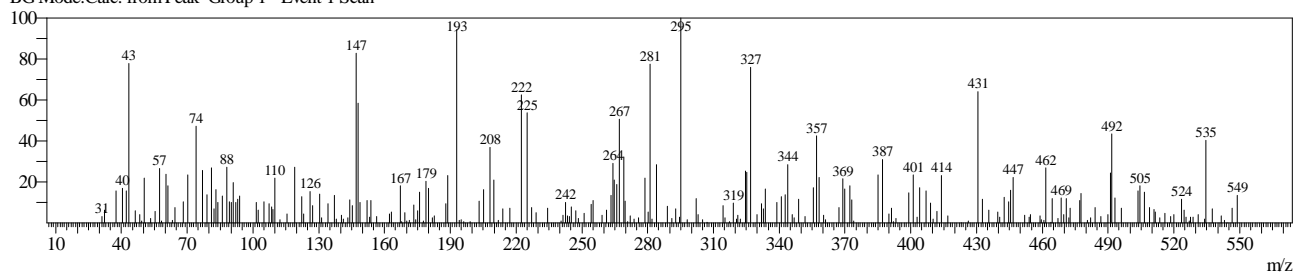


Line#:36 R.Time:18.891(Scan#:20030)

MassPeaks:251

RawMode:Averaged 18.890-18.892(20029-20031) BasePeak:295(843)

BG Mode:Calc. from Peak Group 1 - Event 1 Scan

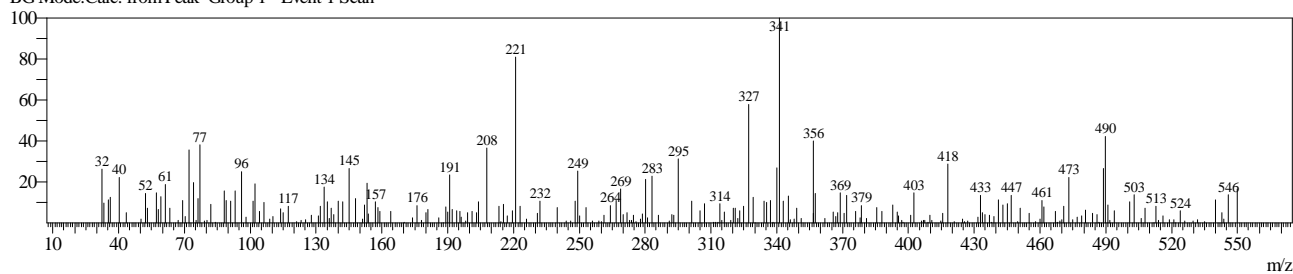


Line#:37 R.Time:18.958(Scan#:20110)

MassPeaks:248

RawMode:Averaged 18.957-18.958(20109-20111) BasePeak:341(1237)

BG Mode:Calc. from Peak Group 1 - Event 1 Scan

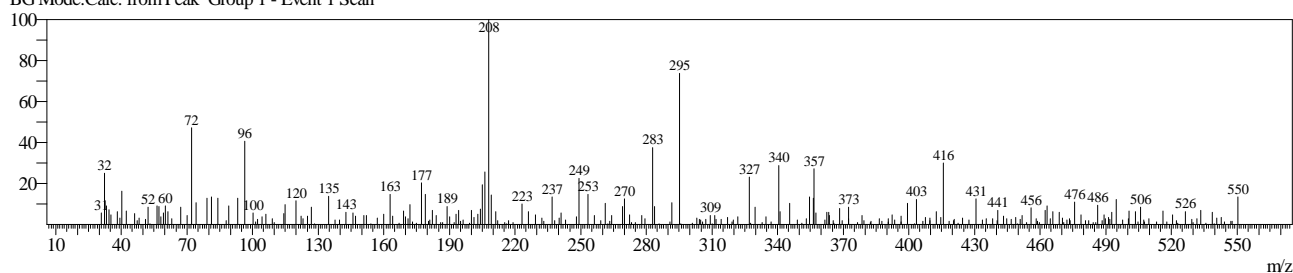


Line#:38 R.Time:18.983(Scan#:20140)

MassPeaks:280

RawMode:Averaged 18.982-18.983(20139-20141) BasePeak:208(1752)

BG Mode:Calc. from Peak Group 1 - Event 1 Scan

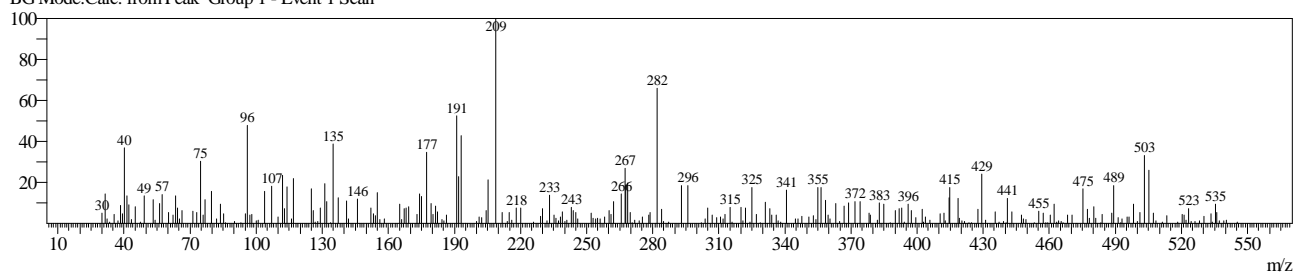


Line#:39 R.Time:19.049(Scan#:20220)

MassPeaks:279

RawMode:Averaged 19.048-19.050(20219-20221) BasePeak:209(1504)

BG Mode:Calc. from Peak Group 1 - Event 1 Scan

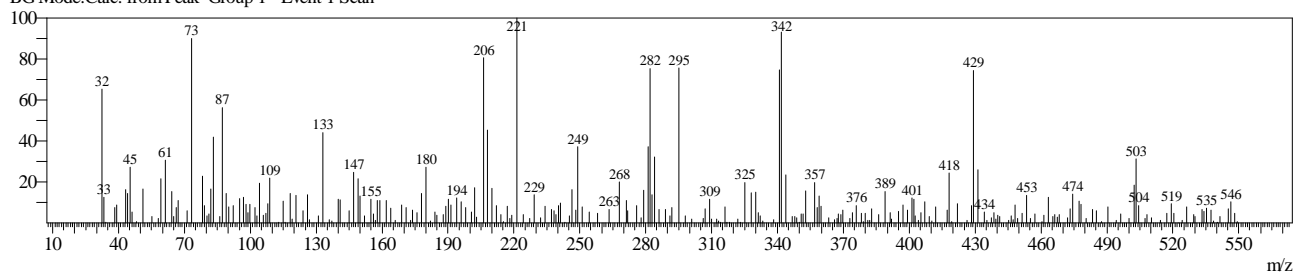


Line#:40 R.Time:19.241(Scan#:20450)

MassPeaks:272

RawMode:Averaged 19.240-19.242(20449-20451) BasePeak:221(1262)

BG Mode:Calc. from Peak Group 1 - Event 1 Scan

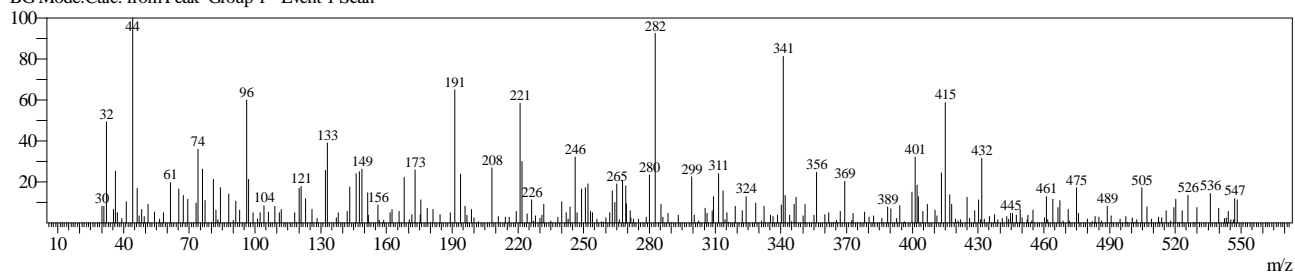


Line#:41 R.Time:19.449(Scan#:20700)

MassPeaks:273

RawMode:Averaged 19.448-19.450(20699-20701) BasePeak:44(1283)

BG Mode:Calc. from Peak Group 1 - Event 1 Scan

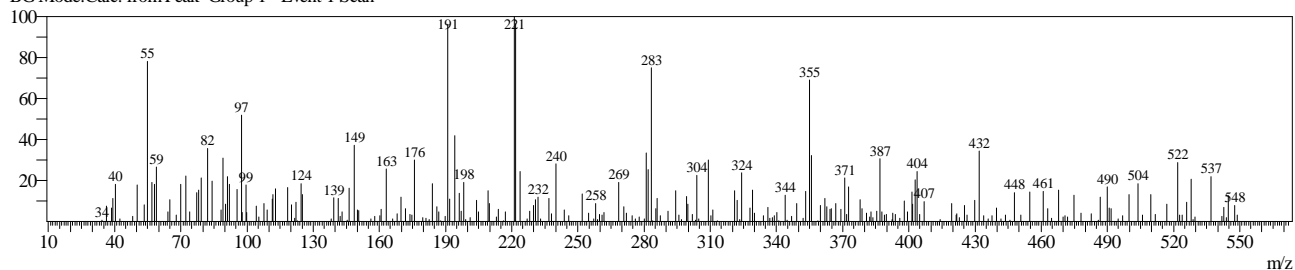


Line#:42 R.Time:19.483(Scan#:20740)

MassPeaks:259

RawMode:Averaged 19.482-19.483(20739-20741) BasePeak:221(934)

BG Mode:Calc. from Peak Group 1 - Event 1 Scan

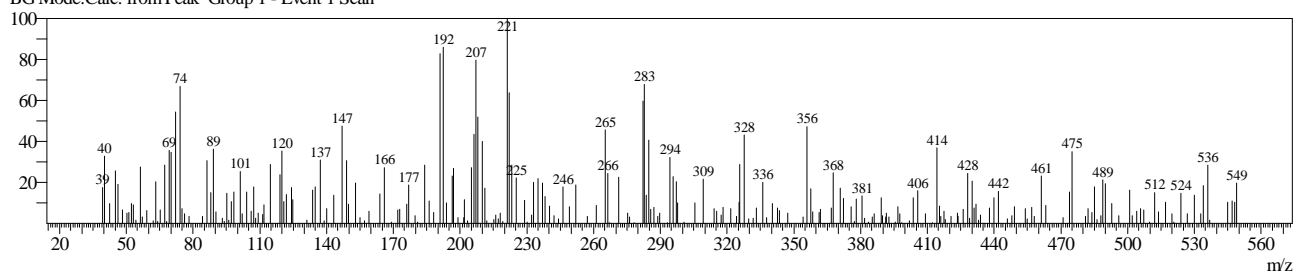


Line#:43 R.Time:19.540(Scan#:20809)

MassPeaks:258

RawMode:Averaged 19.539-19.541(20808-20810) BasePeak:221(933)

BG Mode:Calc. from Peak Group 1 - Event 1 Scan

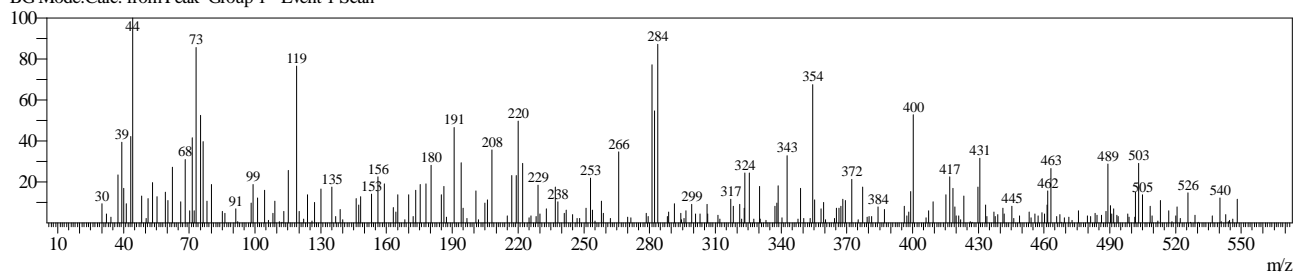


Line#:44 R.Time:19.683(Scan#:20980)

MassPeaks:252

RawMode:Averaged 19.682-19.683(20979-20981) BasePeak:44(971)

BG Mode:Calc. from Peak Group 1 - Event 1 Scan

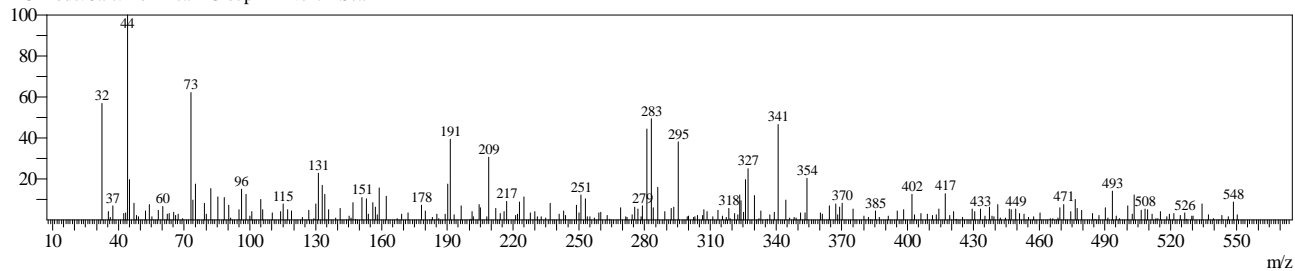


Line#:45 R.Time:19.816(Scan#:21140)

MassPeaks:258

RawMode:Averaged 19.815-19.817(21139-21141) BasePeak:44(2124)

BG Mode:Calc. from Peak Group 1 - Event 1 Scan

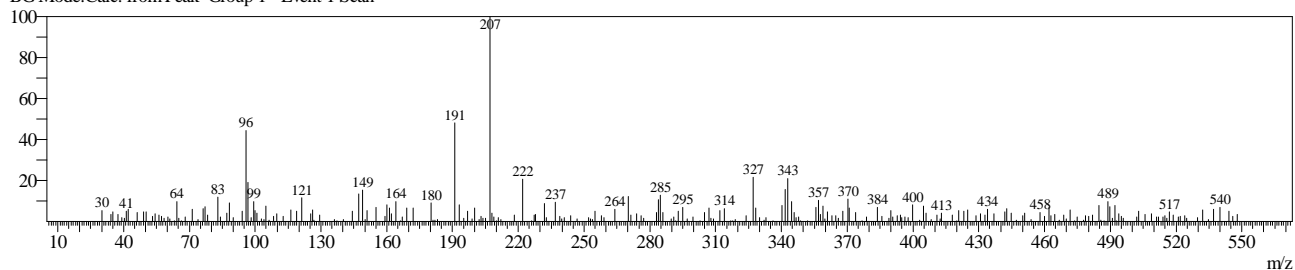


Line#:46 R.Time:19.908(Scan#:21250)

MassPeaks:258

RawMode:Averaged 19.907-19.908(21249-21251) BasePeak:207(2506)

BG Mode:Calc. from Peak Group 1 - Event 1 Scan

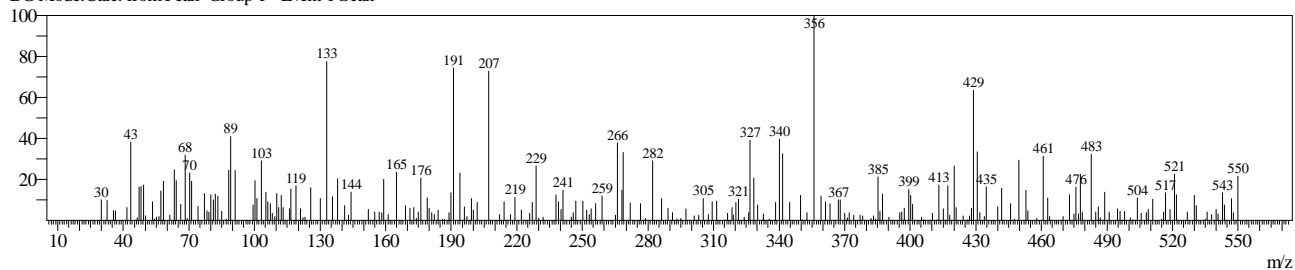


Line#:47 R.Time:19.941(Scan#:21290)

MassPeaks:257

RawMode:Averaged 19.940-19.942(21289-21291) BasePeak:356(960)

BG Mode:Calc. from Peak Group 1 - Event 1 Scan

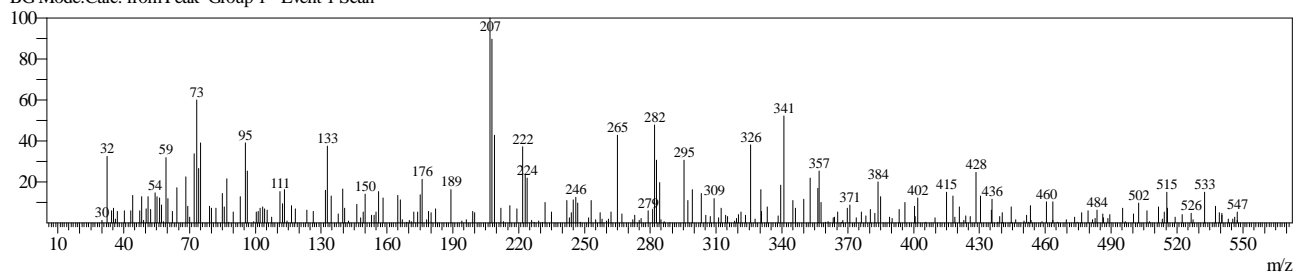


Line#:48 R.Time:19.974(Scan#:21330)

MassPeaks:262

RawMode:Averaged 19.973-19.975(21329-21331) BasePeak:207(1250)

BG Mode:Calc. from Peak Group 1 - Event 1 Scan

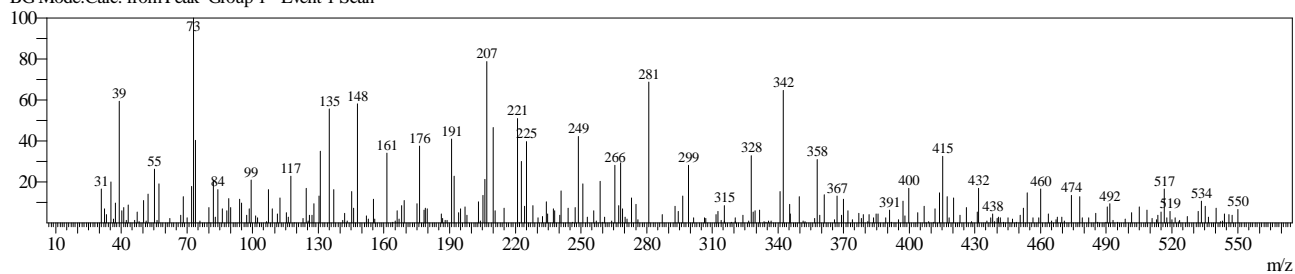


Line#:49 R.Time:20.264(Scan#:21678)

MassPeaks:273

RawMode:Averaged 20.263-20.265(21677-21679) BasePeak:73(1112)

BG Mode:Calc. from Peak Group 1 - Event 1 Scan

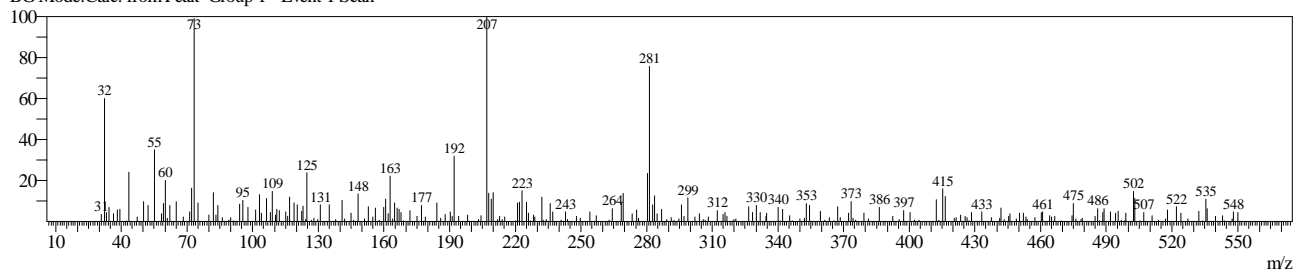


Line#:50 R.Time:20.333(Scan#:21760)

MassPeaks:261

RawMode:Averaged 20.332-20.333(21759-21761) BasePeak:207(2129)

BG Mode:Calc. from Peak Group 1 - Event 1 Scan

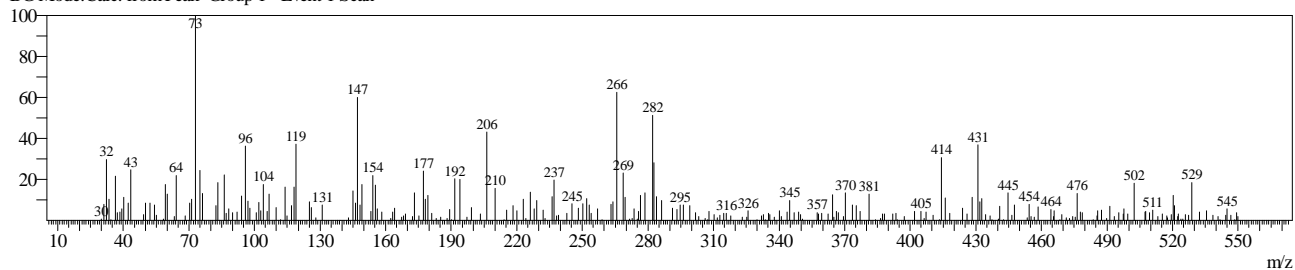


Line#:51 R.Time:20.466(Scan#:21920)

MassPeaks:278

RawMode:Averaged 20.465-20.467(21919-21921) BasePeak:73(1334)

BG Mode:Calc. from Peak Group 1 - Event 1 Scan

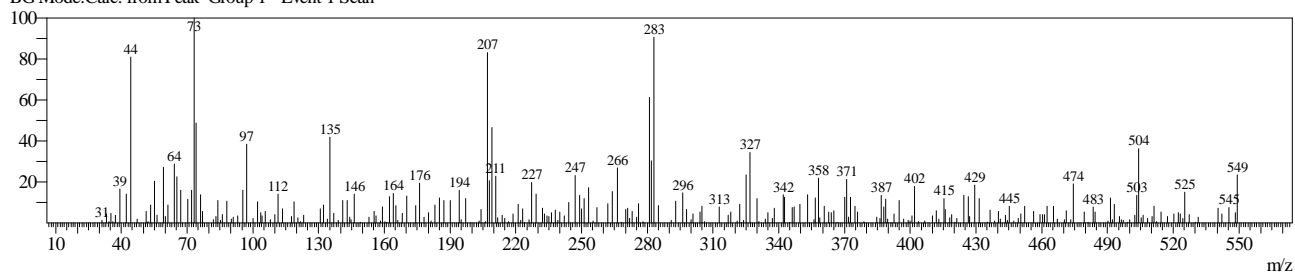


Line#:52 R.Time:20.629(Scan#:22116)

MassPeaks:277

RawMode:Averaged 20.628-20.630(22115-22117) BasePeak:73(1210)

BG Mode:Calc. from Peak Group 1 - Event 1 Scan

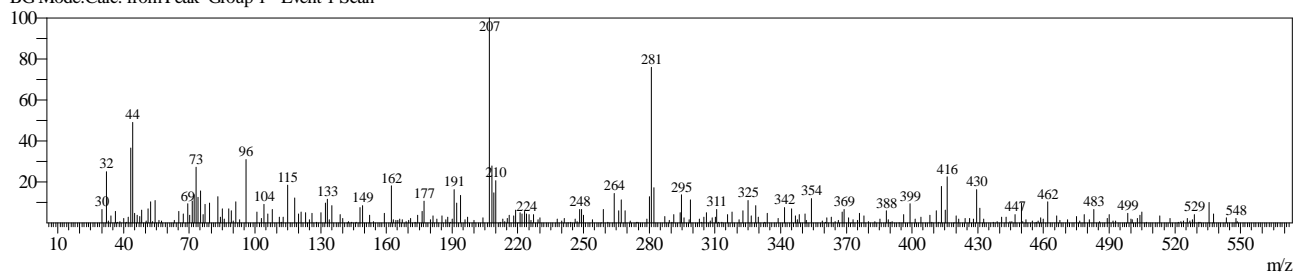


Line#:53 R.Time:20.724(Scan#:22230)

MassPeaks:284

RawMode:Averaged 20.723-20.725(22229-22231) BasePeak:207(2574)

BG Mode:Calc. from Peak Group 1 - Event 1 Scan

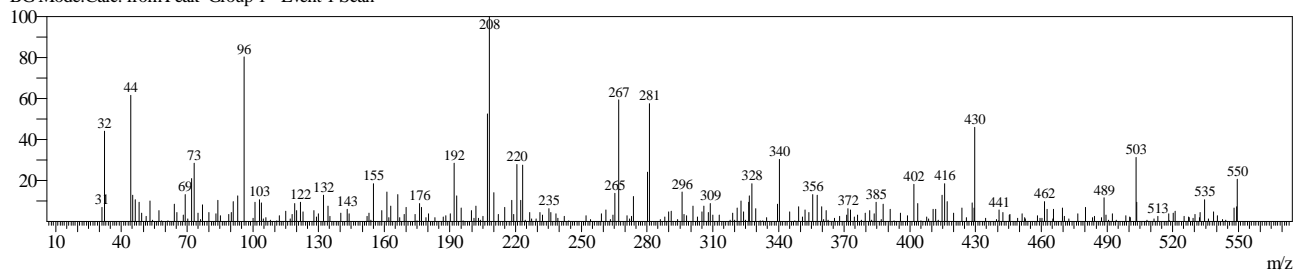


Line#:54 R.Time:20.776(Scan#:22292)

MassPeaks:274

RawMode:Averaged 20.775-20.777(22291-22293) BasePeak:208(1675)

BG Mode:Calc. from Peak Group 1 - Event 1 Scan

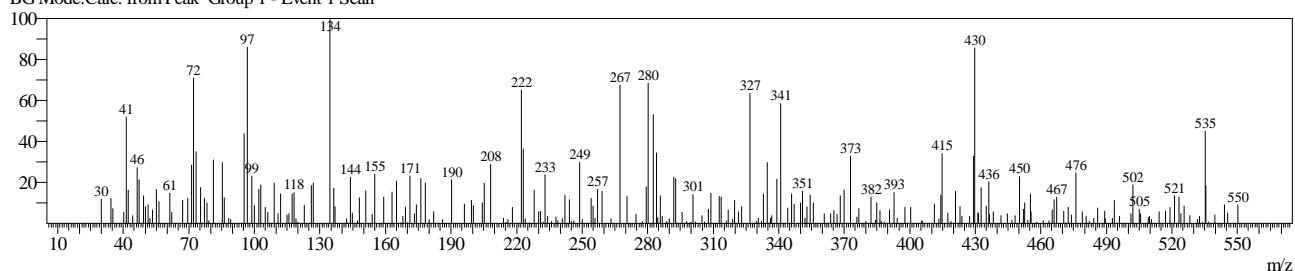


Line#:55 R.Time:21.741(Scan#:23450)

MassPeaks:267

RawMode:Averaged 21.740-21.742(23449-23451) BasePeak:134(869)

BG Mode:Calc. from Peak Group 1 - Event 1 Scan

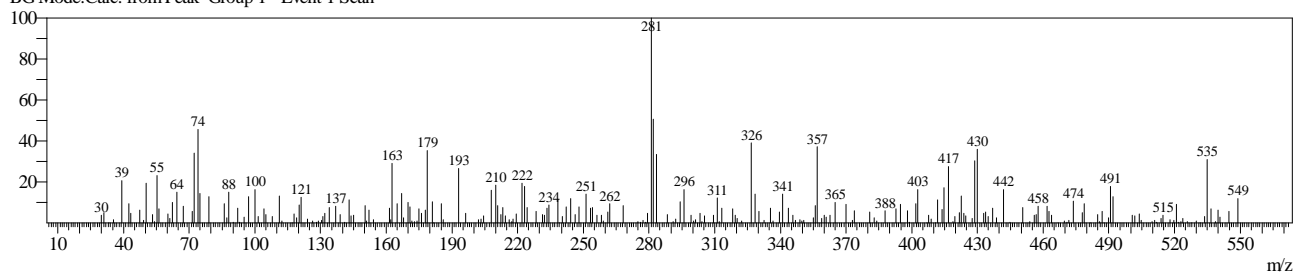


Line#:56 R.Time:21.841(Scan#:23570)

MassPeaks:256

RawMode:Averaged 21.840-21.842(23569-23571) BasePeak:281(1648)

BG Mode:Calc. from Peak Group 1 - Event 1 Scan

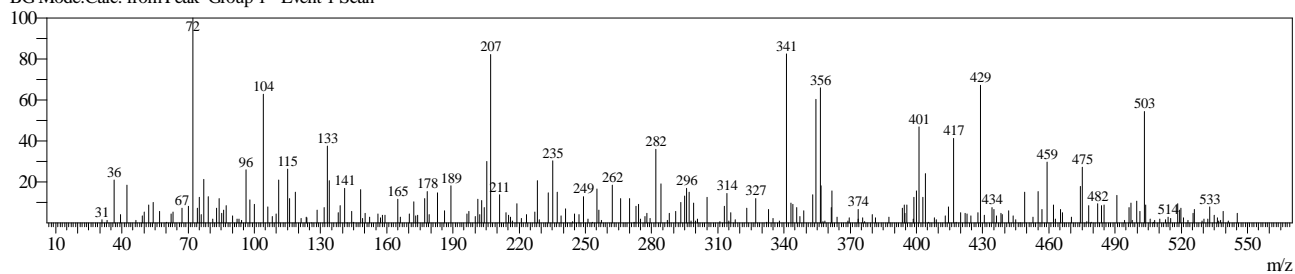


Line#:57 R.Time:21.917(Scan#:23661)

MassPeaks:256

RawMode:Averaged 21.916-21.918(23660-23662) BasePeak:72(1149)

BG Mode:Calc. from Peak Group 1 - Event 1 Scan

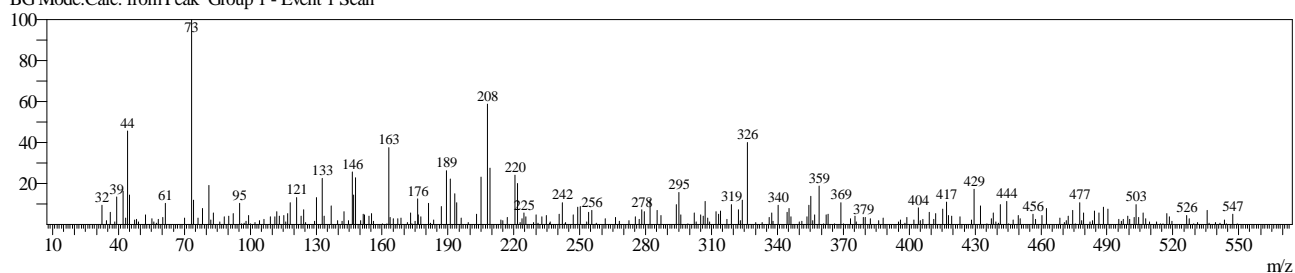


Line#:58 R.Time:22.325(Scan#:24151)

MassPeaks:274

RawMode:Averaged 22.324-22.326(24150-24152) BasePeak:73(2142)

BG Mode:Calc. from Peak Group 1 - Event 1 Scan

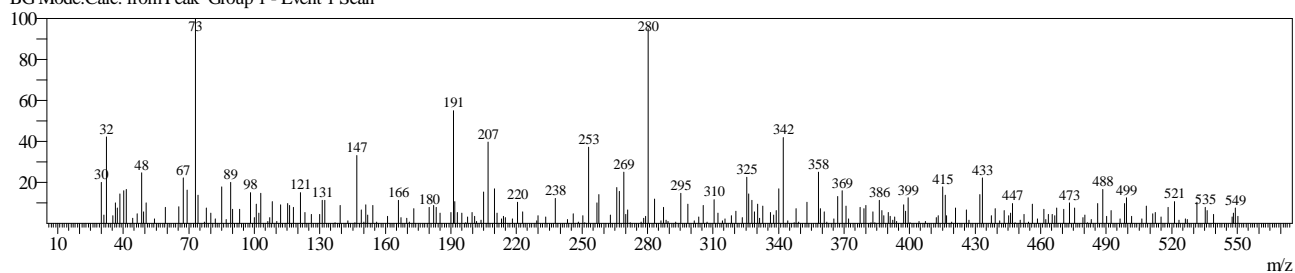


Line#:59 R.Time:22.576(Scan#:24452)

MassPeaks:246

RawMode:Averaged 22.575-22.577(24451-24453) BasePeak:73(1441)

BG Mode:Calc. from Peak Group 1 - Event 1 Scan

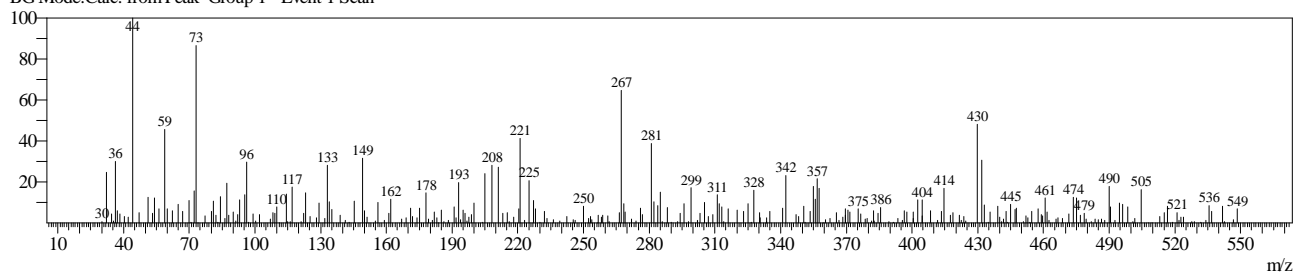


Line#:60 R.Time:23.008(Scan#:24970)

MassPeaks:291

RawMode:Averaged 23.007-23.008(24969-24971) BasePeak:44(1652)

BG Mode:Calc. from Peak Group 1 - Event 1 Scan

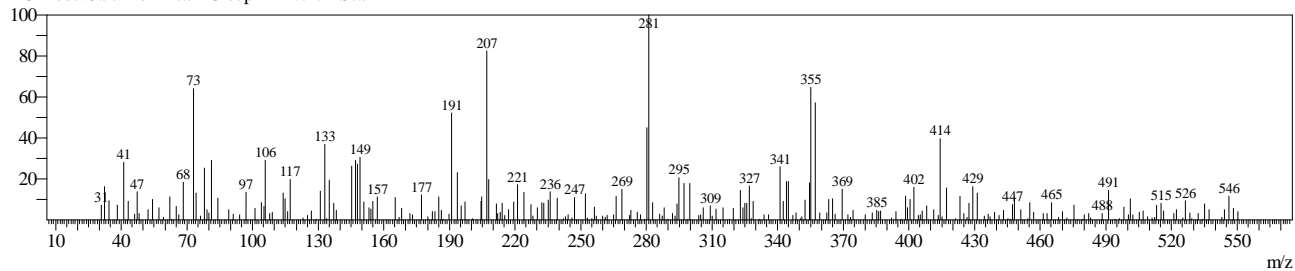


Line#:61 R.Time:23.129(Scan#:25116)

MassPeaks:259

RawMode:Averaged 23.128-23.130(25115-25117) BasePeak:281(1571)

BG Mode:Calc. from Peak Group 1 - Event 1 Scan

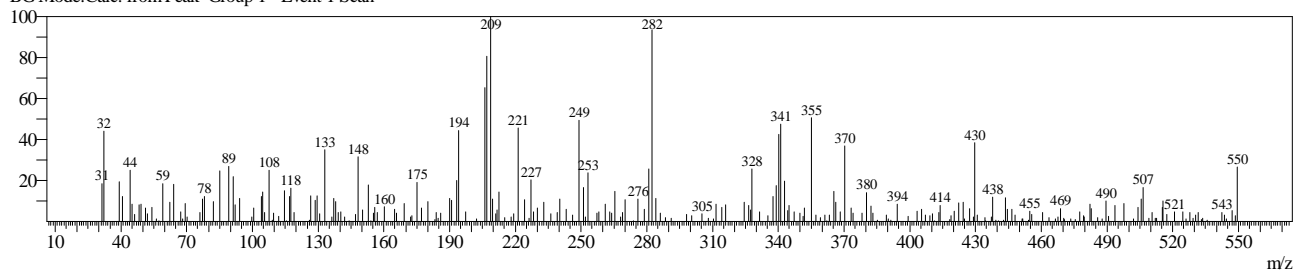


Line#:62 R.Time:23.298(Scan#:25319)

MassPeaks:262

RawMode:Averaged 23.297-23.299(25318-25320) BasePeak:209(1370)

BG Mode:Calc. from Peak Group 1 - Event 1 Scan

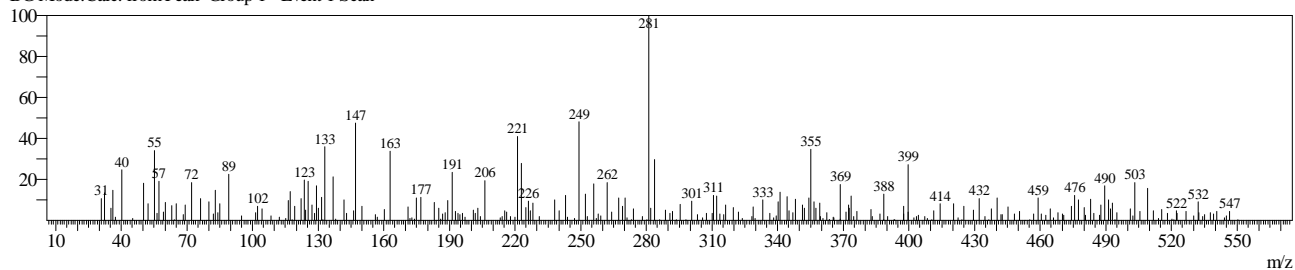


Line#:63 R.Time:23.466(Scan#:25520)

MassPeaks:268

RawMode:Averaged 23.465-23.467(25519-25521) BasePeak:281(1497)

BG Mode:Calc. from Peak Group 1 - Event 1 Scan

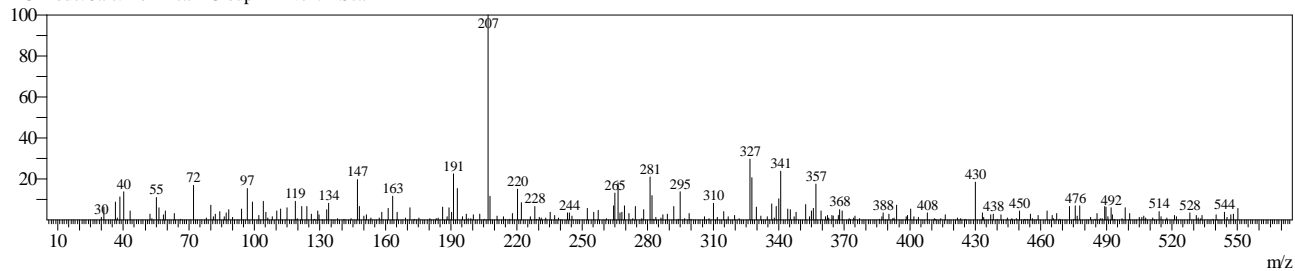


Line#:64 R.Time:23.517(Scan#:25582)

MassPeaks:257

RawMode:Averaged 23.517-23.518(25581-25583) BasePeak:207(2696)

BG Mode:Calc. from Peak Group 1 - Event 1 Scan



Line#:65 R.Time:23.549(Scan#:25620)

MassPeaks:256

RawMode:Averaged 23.548-23.550(25619-25621) BasePeak:207(2039)

BG Mode:Calc. from Peak Group 1 - Event 1 Scan

