

Sample : 4162-6
Operator:
Comment :
Group : Janoshik EDX screen
Date : 2024-11-22 09:27:31

Measurement Condition

Instrument: EDX-7000	Atmosphere: He	Collimator: 3 (mm)	Sample Cup: Mylar				
Analyte	TG kV	uA	FI	Acq. (keV)	Anal. (keV)	Time (sec)	DT (%)
Ti-U	Rh 50	124-Auto	----	0 - 40	4.00-35.00	Live- 60	30
Na-Sc	Rh 15	999-Auto	----	0 - 20	0.00- 4.40	Live- 60	18

Qualitative Result

Element: Rh, P , S , Zn, Si

Peak List

Channel	Line	keV	Net Int. (cps/uA)
Ti-U	ZnKa	8.62	0.6660 QF
	RhKaC	19.10	25.9573
	RhKa	20.20	7.5660
	RhKbC	21.36	4.0306
	RhKb	22.74	1.0329
Na-Sc	RhLaESC	0.95	0.0419
	RhLb1ESC	1.09	0.0193
	SiKa	1.74	0.0093 QF
	P Ka	2.01	0.1420 QF
	----	2.38	0.0565
	RhLa	2.70	3.1181
	RhLb1	2.84	1.5685
	RhLb2	3.02	0.2273
	RhLg1	3.15	0.0707
	RhLg3	3.37	0.0411

Quantitative Result

Analyte	Result	[3-sigma]	Proc.-Calc.	Line	Int. (cps/uA)
P	82.901 %	[2.311]	Quan-FP	P Ka	0.1420
Si	8.601 %	[2.029]	Quan-FP	SiKa	0.0093
Zn	8.498 %	[1.418]	Quan-FP	ZnKa	0.6660

Sample : 4162-6

Group : Janoshik EDX screen

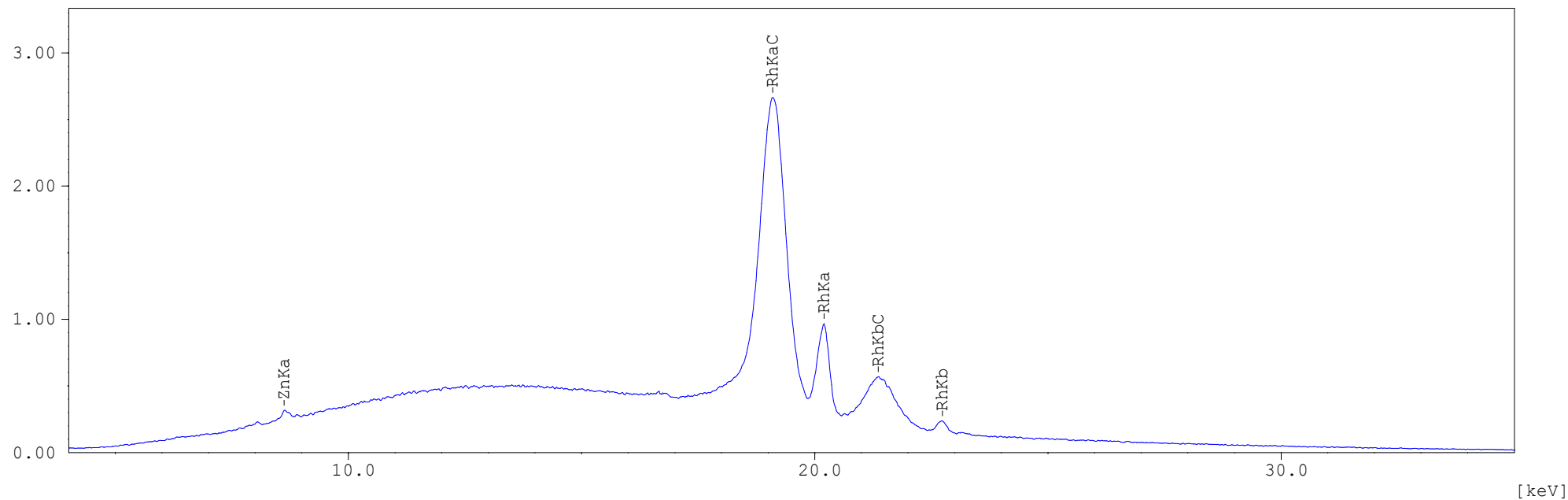
Date : 2024-11-22 09:27:31

Operator:

Comment :

01/01

[cps/uA] Ti-U



[cps/uA] Na-Sc

