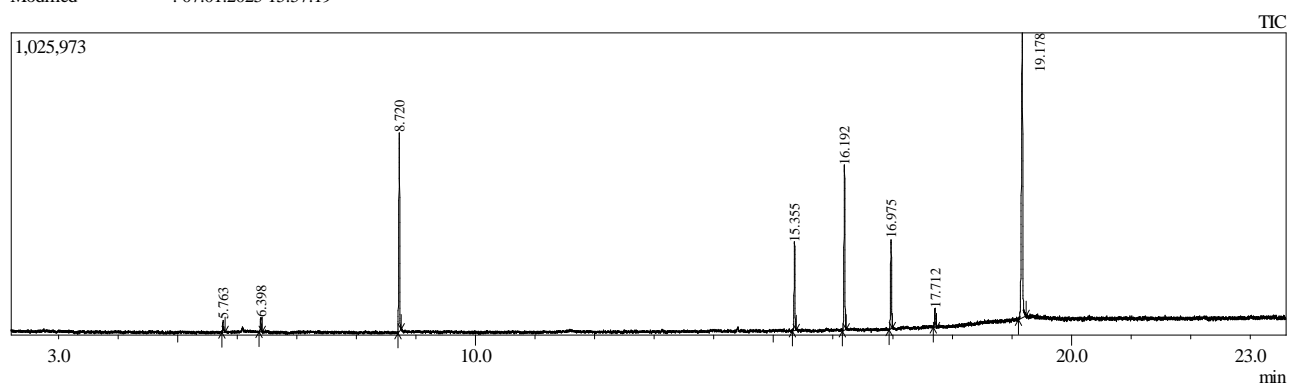


Sample Information

Analyzed by : Admin
 Analyzed : 07.01.2025 15:33:39
 Sample Type : Unknown
 Level # : 1
 Sample Name : 4595-1 AAS - oils Blue cap
 Sample ID :
 IS Amount : [1]=1
 Sample Amount : 1
 Dilution Factor : 1
 Vial # : 89
 Injection Volume : 0.50
 Data File : C:\GCMSsolution\Data\Project1\4595-1 AAS - oils Blue cap_6.qgd
 Org Data File : C:\GCMSsolution\Data\Project1\4595-1 AAS - oils Blue cap_6.qgd
 Method File : C:\GCMSsolution\Data\Project1\the real screening gradient.qgm
 Org Method File : C:\GCMSsolution\Data\Project1\the real screening gradient.qgm
 Report File : C:\GCMSsolution\Data\Project1\Simple Qualitative.qgr
 Tuning File : C:\GCMSsolution\System\Tune1\HIGH CONCENTRATION TUNE.qgt
 Modified by : Admin
 Modified : 07.01.2025 15:57:19



Peak Report TIC

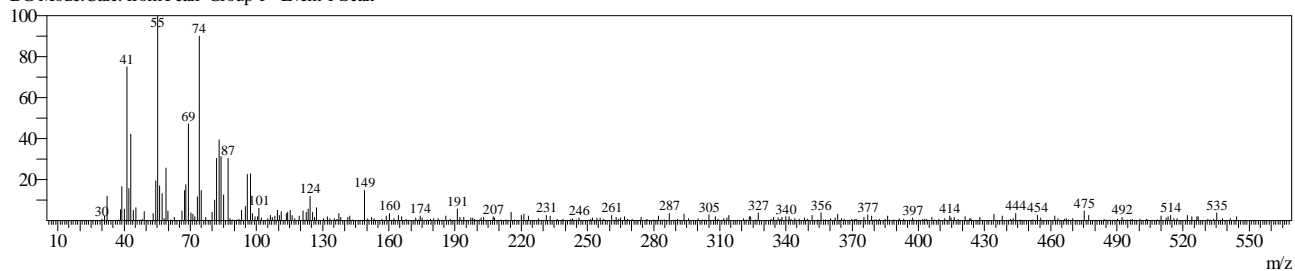
Peak#	R. Time	Area	Area%	Name
1	5.763	42627	1.20	10-Undecenoic acid, methyl ester
2	6.398	50124	1.42	10-Undecenoic acid, ethyl ester
3	8.720	658953	18.60	Benzyl Benzoate
4	15.355	308868	8.72	Glycerol tricaprylate
5	16.192	604934	17.08	2-(Decanoyloxy)propane-1,3-diyl dioctanoate
6	16.975	362437	10.23	3-(Octanoyloxy)propane-1,2-diyl bis(decanoate)
7	17.712	78657	2.22	Decanoic acid, 1,2,3-propanetriyl ester
8	19.178	1435433	40.53	Androsta-1,4-dien-3-one, 17-[(1-oxo-10-undecenyl)oxy]-, (17.β.)-
		3542033	100.00	

Line#:1 R.Time:5.763(Scan#:4277)

MassPeaks:294

RawMode:Averaged 5.763-5.764(4276-4278) BasePeak:55(3904)

BG Mode:Calc. from Peak Group 1 - Event 1 Scan

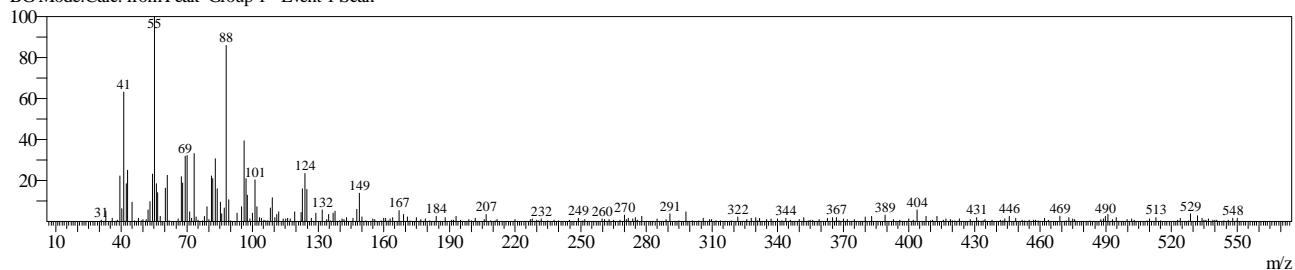


Line#:2 R.Time:6.398(Scan#:5038)

MassPeaks:276

RawMode:Averaged 6.397-6.398(5037-5039) BasePeak:55(4431)

BG Mode:Calc. from Peak Group 1 - Event 1 Scan

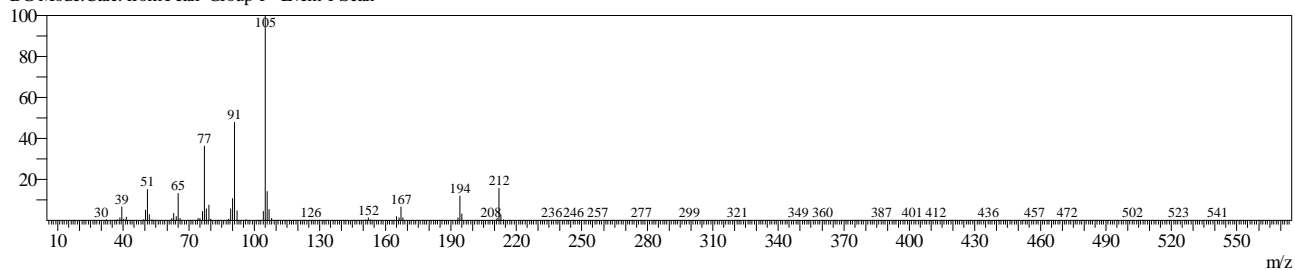


Line#:3 R.Time:8.720(Scan#:7825)

MassPeaks:286

RawMode:Averaged 8.719-8.721(7824-7826) BasePeak:105(187652)

BG Mode:Calc. from Peak Group 1 - Event 1 Scan

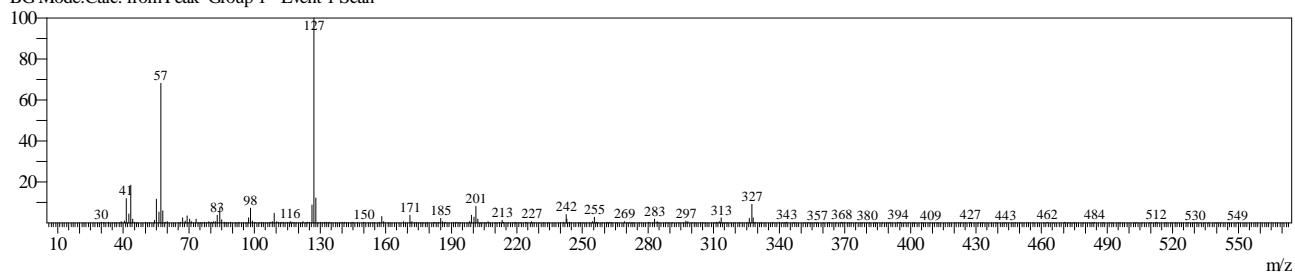


Line#:4 R.Time:15.355(Scan#:15787)

MassPeaks:324

RawMode:Averaged 15.354-15.356(15786-15788) BasePeak:127(77346)

BG Mode:Calc. from Peak Group 1 - Event 1 Scan

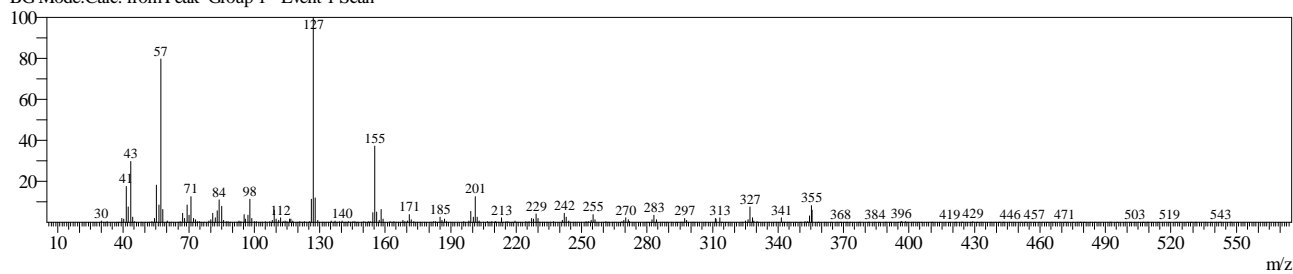


Line#:5 R.Time:16.192(Scan#:16792)

MassPeaks:352

RawMode:Averaged 16.192-16.193(16791-16793) BasePeak:127(92132)

BG Mode:Calc. from Peak Group 1 - Event 1 Scan

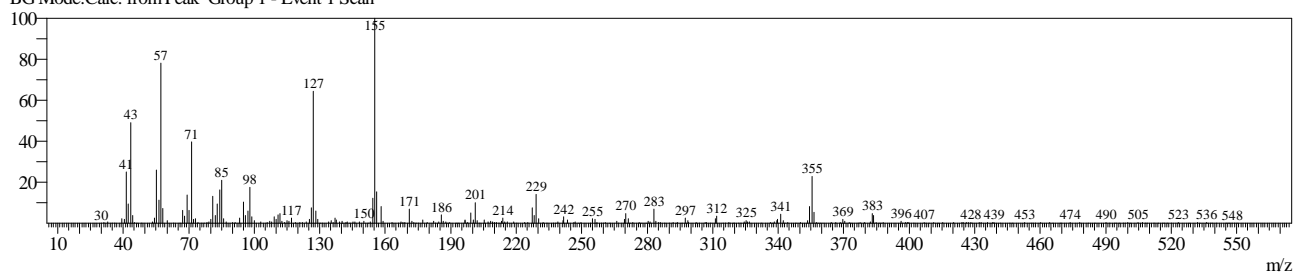


Line#:6 R.Time:16.975(Scan#:17731)

MassPeaks:322

RawMode:Averaged 16.974-16.976(17730-17732) BasePeak:155(35615)

BG Mode:Calc. from Peak Group 1 - Event 1 Scan

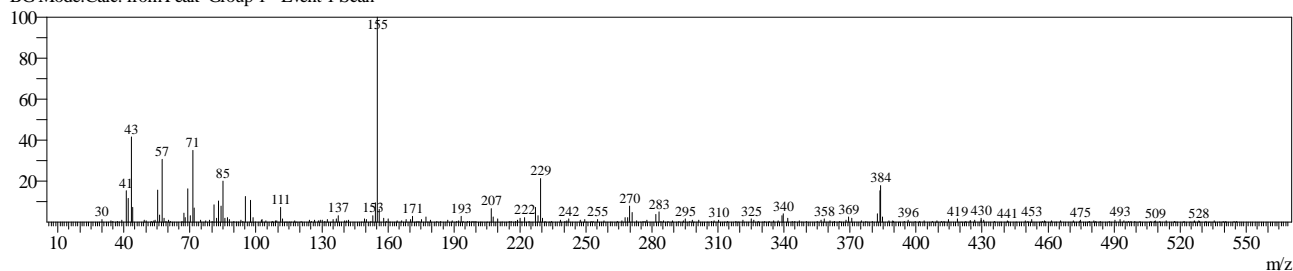


Line#:7 R.Time:17.712(Scan#:18615)

MassPeaks:302

RawMode:Averaged 17.711-17.712(18614-18616) BasePeak:155(11011)

BG Mode:Calc. from Peak Group 1 - Event 1 Scan



Line#:8 R.Time:19.178(Scan#:20374)

MassPeaks:365

RawMode:Averaged 19.177-19.178(20373-20375) BasePeak:122(197517)

BG Mode:Calc. from Peak Group 1 - Event 1 Scan

