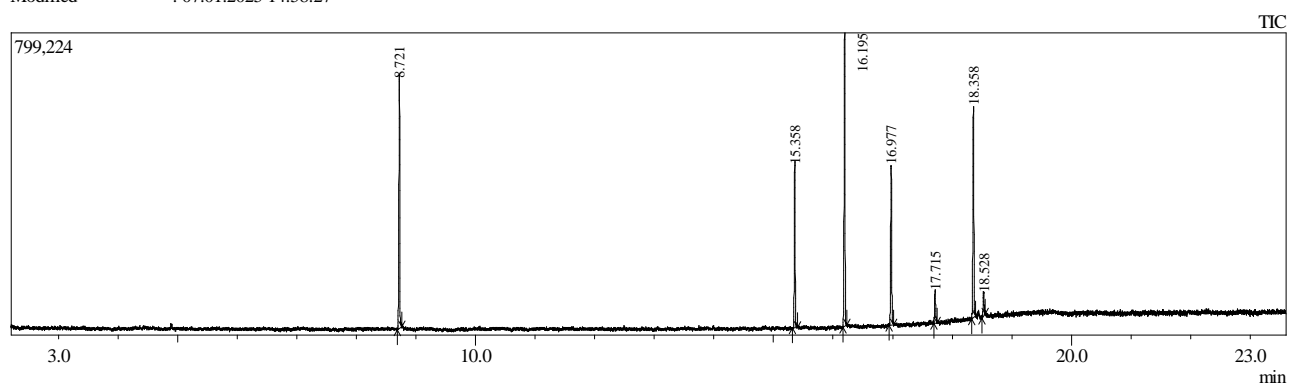


Sample Information

Analyzed by : Admin
 Analyzed : 07.01.2025 14:34:48
 Sample Type : Unknown
 Level # : 1
 Sample Name : 4595-2 AAS - oils Red cap
 Sample ID :
 IS Amount : [1]=1
 Sample Amount : 1
 Dilution Factor : 1
 Vial # : 88
 Injection Volume : 0.50
 Data File : C:\GCMSsolution\Data\Project1\4595-2 AAS - oils Red cap_4.qgd
 Org Data File : C:\GCMSsolution\Data\Project1\4595-2 AAS - oils Red cap_4.qgd
 Method File : C:\GCMSsolution\Data\Project1\the real screening gradient.qgm
 Org Method File : C:\GCMSsolution\Data\Project1\the real screening gradient.qgm
 Report File : C:\GCMSsolution\Data\Project1\Simple Qualitative.qgr
 Tuning File : C:\GCMSsolution\System\Tune1\HIGH CONCENTRATION TUNE.qgt
 Modified by : Admin
 Modified : 07.01.2025 14:58:27



Peak Report TIC

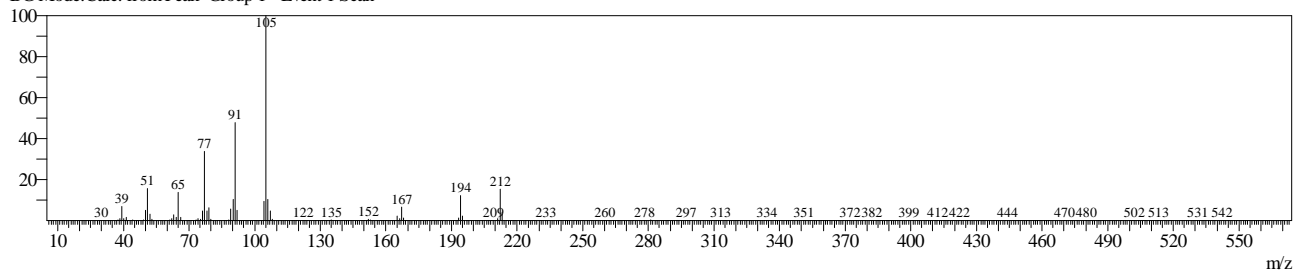
Peak#	R. Time	Area	Area%	Name
1	8.721	675193	20.99	Benzyl Benzoate
2	15.358	432445	13.45	Glycerol tricaprilate
3	16.195	821408	25.54	2-(Decanoyloxy)propane-1,3-diyl dioctanoate
4	16.977	506119	15.74	3-(Octanoyloxy)propane-1,2-diyl bis(decanoate)
5	17.715	99580	3.10	Decanoic acid, 1,2,3-propanetriyl ester
6	18.358	604807	18.80	Nandrolone decanoate
7	18.528	76823	2.39	5-Androstene-3.beta.,7.beta.-diol 3-isocaproate
		3216375	100.00	

Line#:1 R.Time:8.722(Scan#:7827)

MassPeaks:279

RawMode:Averaged 8.721-8.723(7826-7828) BasePeak:105(185072)

BG Mode:Calc. from Peak Group 1 - Event 1 Scan

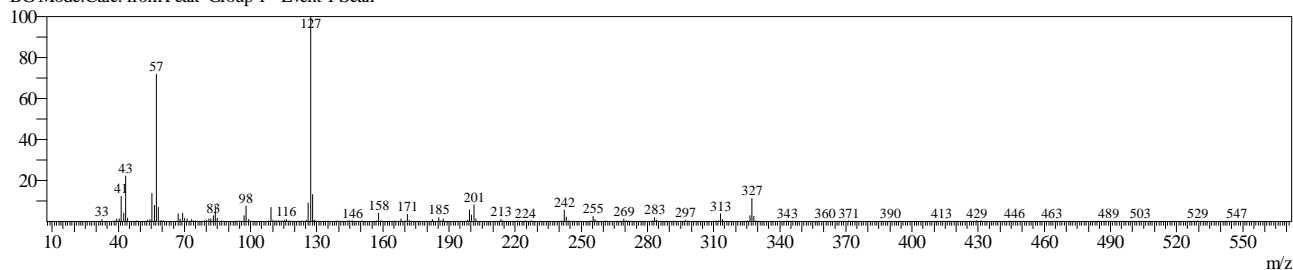


Line#:2 R.Time:15.358(Scan#:15791)

MassPeaks:317

RawMode:Averaged 15.358-15.359(15790-15792) BasePeak:127(105178)

BG Mode:Calc. from Peak Group 1 - Event 1 Scan

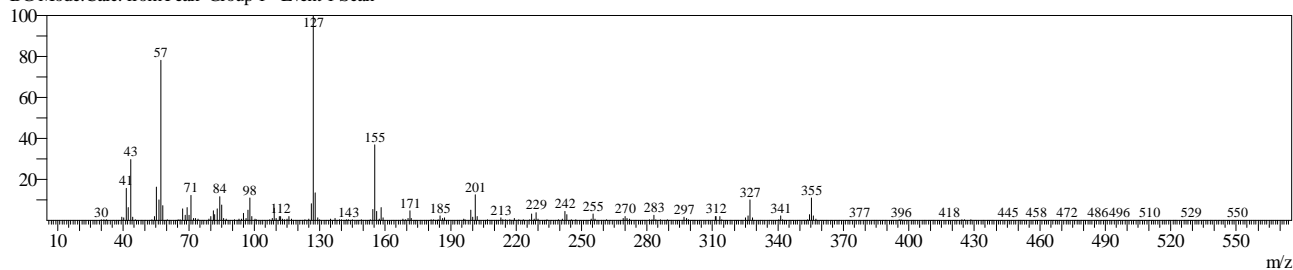


Line#:3 R.Time:16.195(Scan#:16795)

MassPeaks:354

RawMode:Averaged 16.194-16.196(16794-16796) BasePeak:127(129149)

BG Mode:Calc. from Peak Group 1 - Event 1 Scan

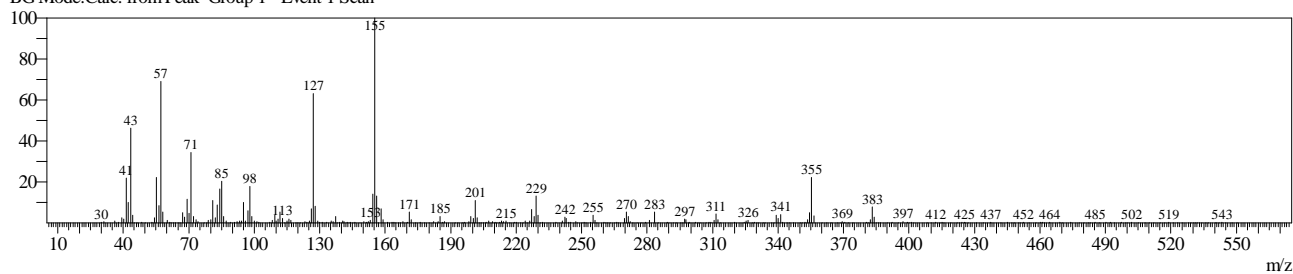


Line#:4 R.Time:16.977(Scan#:17733)

MassPeaks:335

RawMode:Averaged 16.976-16.977(17732-17734) BasePeak:155(52973)

BG Mode:Calc. from Peak Group 1 - Event 1 Scan

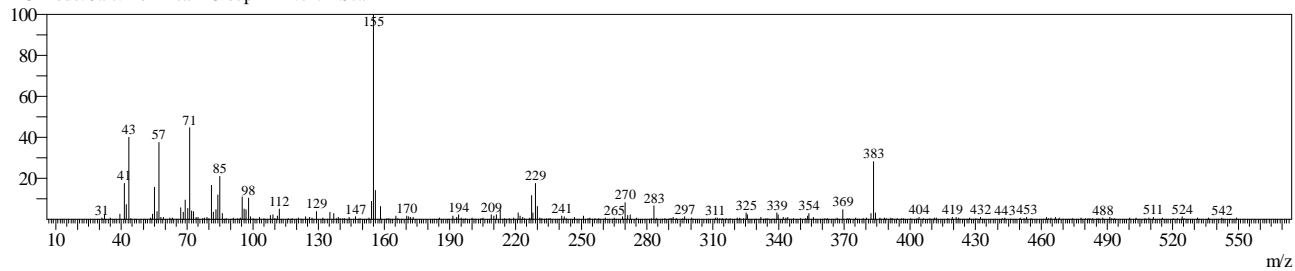


Line#:5 R.Time:17.715(Scan#:18619)

MassPeaks:305

RawMode:Averaged 17.714-17.716(18618-18620) BasePeak:155(13730)

BG Mode:Calc. from Peak Group 1 - Event 1 Scan

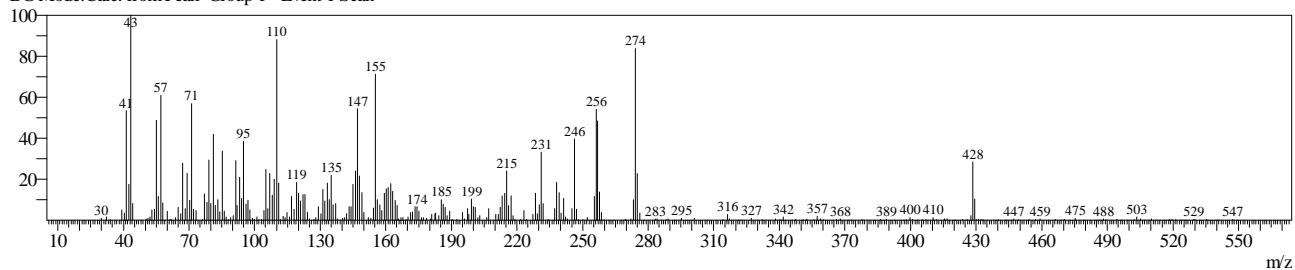


Line#:6 R.Time:18.358(Scan#:19390)

MassPeaks:340

RawMode:Averaged 18.357-18.358(19389-19391) BasePeak:43(24980)

BG Mode:Calc. from Peak Group 1 - Event 1 Scan



Line#:7 R.Time:18.528(Scan#:19594)

MassPeaks:310

RawMode:Averaged 18.527-18.528(19593-19595) BasePeak:272(6001)

BG Mode:Calc. from Peak Group 1 - Event 1 Scan

